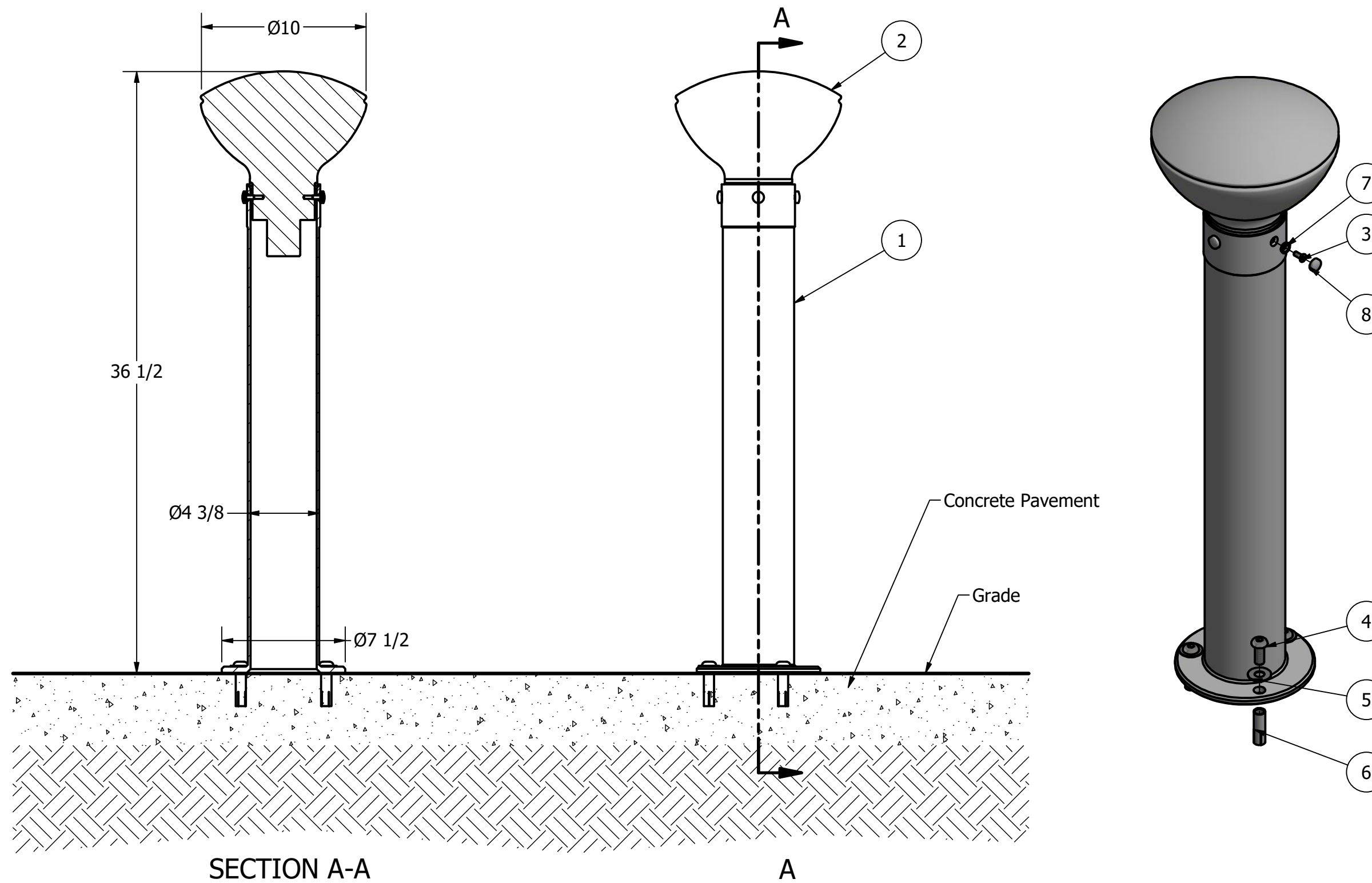


Bollard, Model R-9821-FL



SECTION A-A

A

Flanged / Surface Mount

Notes:

- Embedment details are for reference illustration only. Minimum foundation sizes depend on local soil conditions, weather conditions, and engineering requirements.
- Bollard post is provided as shown, with material detailed in legend below. Concrete, foundation and/or installation ordered separately or provided by others.
- This drawing is not drawn to scale. Dimensions provided herein is for reference only. Please consult Reliance Foundry sales professionals if any dimension is critical to your particular installation.
- Reliance Foundry reserves the right to amend design and specifications without prior notice for product improvement.

| PARTS LIST | | | | | |
|------------|-----|---|--|-----------------|--------|
| ITEM | QTY | PART NUMBER | DESCRIPTION | MATERIAL | MASS |
| 1 | 1 | R-7909-F | R7907-F Flanged Bollard | Steel | 24 lbs |
| 2 | 1 | R9821 Solar Head | R9821 Solar Head | | 6 lbs |
| 3 | 4 | Hexagon Socket Temper Resistant M6 x 20 | Hexagon Socket Countersunk Head Screw Temper Resistant M6 x 20 | Stainless Steel | |
| 4 | 3 | Button Head Bolt 1/2" X 1 1/4" | Hexagon Socket Button Head Cap Bolt 1/2" X 1 1/4" - requires 5/16" hex key | Stainless Steel | |
| 5 | 3 | Stainless Steel Washer 1/2" | Stainless Steel Washer 1/2" OD 1 1/4" Thick.05" | Stainless Steel | |
| 6 | 3 | Drop-in Concrete Insert 1/2" | Drop-in Concrete Insert 1/2" - requires 5/8" X 2" hole (dia X depth) | Steel Plated | |
| 7 | 4 | Pop-on Screw Base 1/4" | SPAENAUR Pop-on Screw Base 1/4" Flat Head Countersunk Screw | | |
| 8 | 4 | Pop-on Screw Cover 1/4" | SPAENAUR Pop-on Screw Cover 1/4" Flat Head Countersunk Screw | | |

General Description:

R-9821-FL solar bollards feature a modern design with a flanged base for easy bolt-down installation. These lit bollards have bright, solar-powered LEDs and are built to withstand harsh weather conditions. These bollards are IP68 certified, and can be submersed in up to 9.8 feet of water without leaking. They are easy to install and completely self-sufficient, with no trenching, cabling, or wiring required. Other mounting options are available. R-9821-FL solar bollards are also IK10 certified to withstand impact from debris or vandalism.

For more information on bollard post installation, please visit: www.reliance-foundry.com/bollard/installation-bollards

Specifications:

Height: 36" (Above Grade)

Base Diameter: 4 3/8"

Weight: 24 lbs (Bollard Post Full Length)

Material: Steel (ASTM A36)

Finish Options:

- ✓ Polyester Powdercoated
- See Reliance Foundry's standard color options at www.reliance-foundry.com/bollard/colors-bollards

Mount Options:

- ✓ Flanged Surface Mount (see sheet 1 of 2)
- Optional Chain Accessory (see sheet 2 of 2)

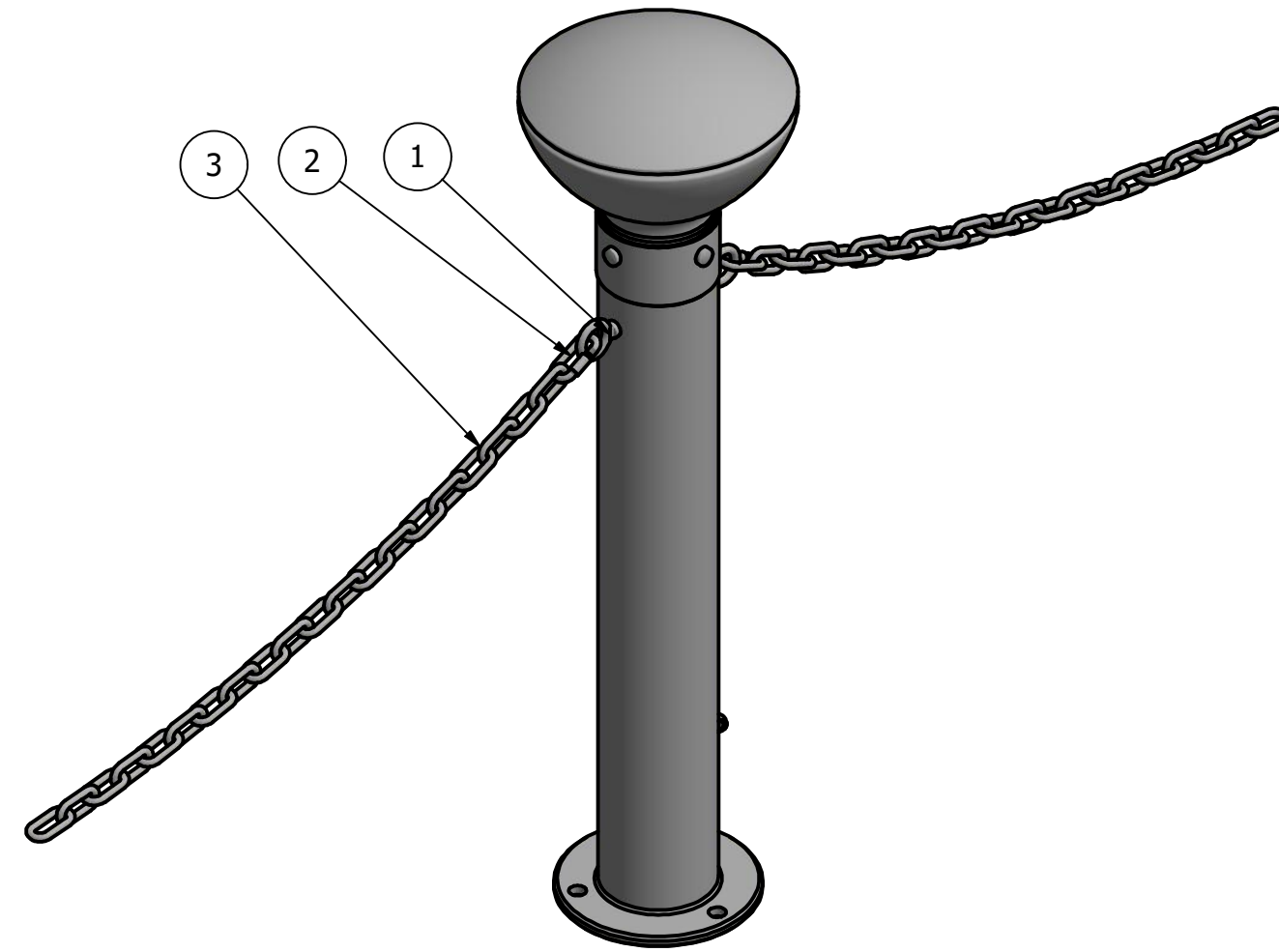
RELIANCE FOUNDRY
SINCE 1925

Unit 207, 6450 - 148 Street, Surrey, BC V3S 7G7, Canada
1-888-735-5680 info@reliance-foundry.com
www.reliance-foundry.com

Bollard, Model R-9821-FL

| | | |
|------|---------|-----|
| SIZE | DWG NO | REV |
| C | R9821F_ | A1 |

Bollard, Model R-9821-FL



Contractor/Installor Alert:

Please give consideration to the location of the chain eye and the padlock pin when installing removable bollard receiver. It is important that the removable bollard receiver padlock pin is oriented in the same direction as the chain is intended to flow.

Optional Chain Accessories Installation Details

| PARTS LIST | | | |
|------------|---------------------------------|---------------------------------------|---------------------|
| ITEM | PART NUMBER | DESCRIPTION | MATERIAL |
| 1 | Chain Eye 3/8" (Optional) | Optional Chain Eye 3/8" | Steel Powder Coated |
| 2 | Quick Link Connector (Optional) | Optional Quick Link Connector | Steel Powder Coated |
| 3 | Chain 5/16" (Optional) | Optional Chain 5/16" (Sold by Length) | Steel Powder Coated |

General Description:

R-9821-FL solar bollards feature a modern design with a flanged base for easy bolt-down installation. These lit bollards have bright, solar-powered LEDs and are built to withstand harsh weather conditions. These bollards are IP68 certified, and can be submersed in up to 9.8 feet of water without leaking. They are easy to install and completely self-sufficient, with no trenching, cabling, or wiring required. Other mounting options are available. R-9821-FL solar bollards are also IK10 certified to withstand impact from debris or vandalism.

For more information on bollard post installation, please visit: www.reliance-foundry.com/bollard/installation-bollards

Specifications:

Height: 36" (Above Grade)

Base Diameter: 4 3/8"

Weight: 24 lbs (Bollard Post Full Length)

Material: Steel (ASTM A36)

Finish Options:

- Polyester Powdercoated
- See Reliance Foundry's standard color options at www.reliance-foundry.com/bollard/colors-bollards

Mount Options:

- Flanged Surface Mount (see sheet 1 of 2)
- Optional Chain Accessory (see sheet 2 of 2)

RELIANCE FOUNDRY
SINCE 1925

Unit 207, 6450 - 148 Street, Surrey, BC V3S 7G7, Canada
1-888-735-5680 info@reliance-foundry.com
www.reliance-foundry.com

| | | | |
|---------------------------------|-----------------------|-----|--|
| TITLE | | | |
| Bollard, Model R-9821-FL | | | |
| SIZE | DWG NO | REV | |
| C | R9821-FL_CH_removable | A1 | |