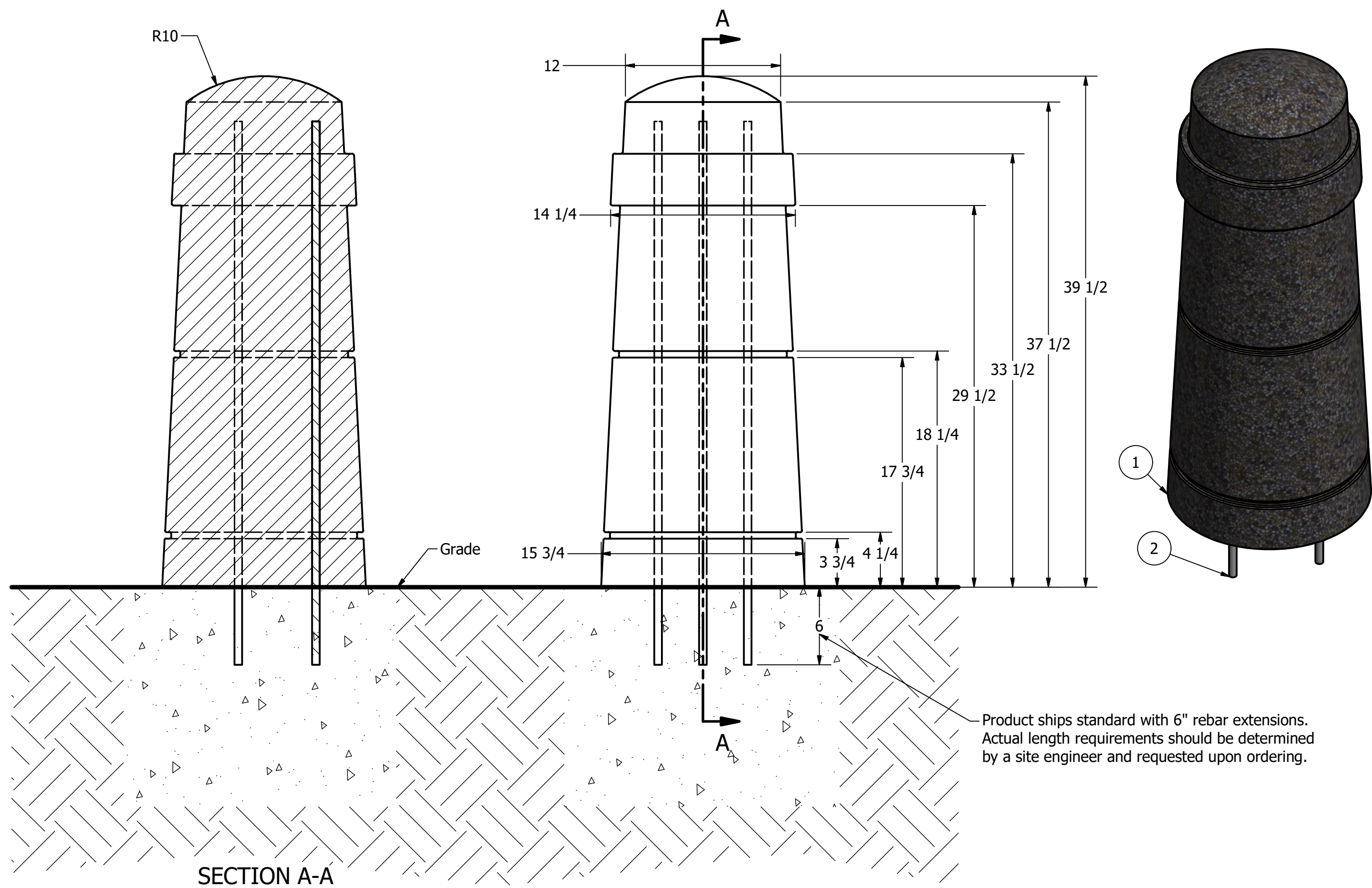


# Concrete Bollard, Model R-9702-RB



## General Description:

The R-9702 Concrete Bollard features tapered verticals and a domed top. It has a wide ornamental collar and slim relief bands for added texture. Concrete bollards are reinforced with epoxy-coated steel rebar, and use high-pressure cement to ensure the best strength and durability against chipping and wear. Exposed aggregate finish features British Columbia granite. Install bollards by embedding rebar extensions in wet concrete—or use adhesive to secure into pre-drilled holes. Bollards ship standard with 6-inch rebar extensions and drilling template. Custom rebar lengths available.

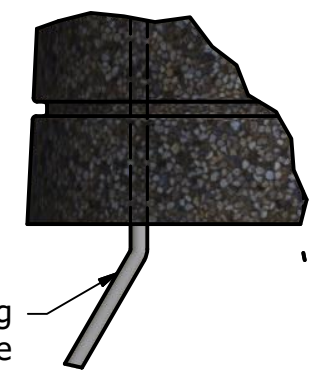
For more information on bollard post installation, please visit: [www.reliance-foundry.com/bollard/installation-bollards](http://www.reliance-foundry.com/bollard/installation-bollards)

## Specifications:

- Height: 39-1/2"
- Base Diameter: 15-3/4"
- Weight: 510 lbs
- Material: Precast Concrete with Epoxy Coated Steel Rebar Reinforcement
- Finish Options:
  - ⊙ Exposed aggregate

## Installation Options:

- ⊙ Existing Concrete: Bollards ship with fitted rebar template. Use template to drill accurate installation holes. Secure rebar in concrete with construction adhesive.
- ⊙ New Concrete: Set rebar footings into wet concrete. Before installing, bend rebar outwards for more secure anchoring.



Bend rebar before setting in wet concrete (new concrete installation only)

## Notes:

- Embedment details are for reference illustration only. Minimum foundation sizes depend on local soil conditions, weather conditions, and engineering requirements.
- Bollard is provided as shown with parts listed below. Concrete foundation and/or installation not provided by Reliance Foundry.
- This drawing is not drawn to scale. Dimensions provided herein is for reference only. Please consult Reliance Foundry sales professionals if any dimension is critical to your particular installation.
- Reliance Foundry reserves the right to amend design and specifications without prior notice for product improvement.

PARTS LIST					
ITEM	QTY	PART NUMBER	DESCRIPTION	MATERIAL	WEIGHT
1	1	R-9702	Concrete Bollard	Precast Concrete	510 lbs
2	3	rb1542	Rebar 15mm Epoxy Coated	Epoxy Coated Steel	5 lbs

**RELIANCE FOUNDRY**  
— SINCE 1925 —

Unit 207, 6450 - 148 Street, Surrey, BC V3S 7G7, Canada  
1-877-789-3245 info@reliance-foundry.com  
[www.reliance-foundry.com](http://www.reliance-foundry.com)

TITLE			
<b>Concrete Bollard Model R-9702-RB</b>			
SIZE	DWG NO	REV	
C	R-9702-RB	B2	
NOT TO SCALE		SHEET 1 OF 1	