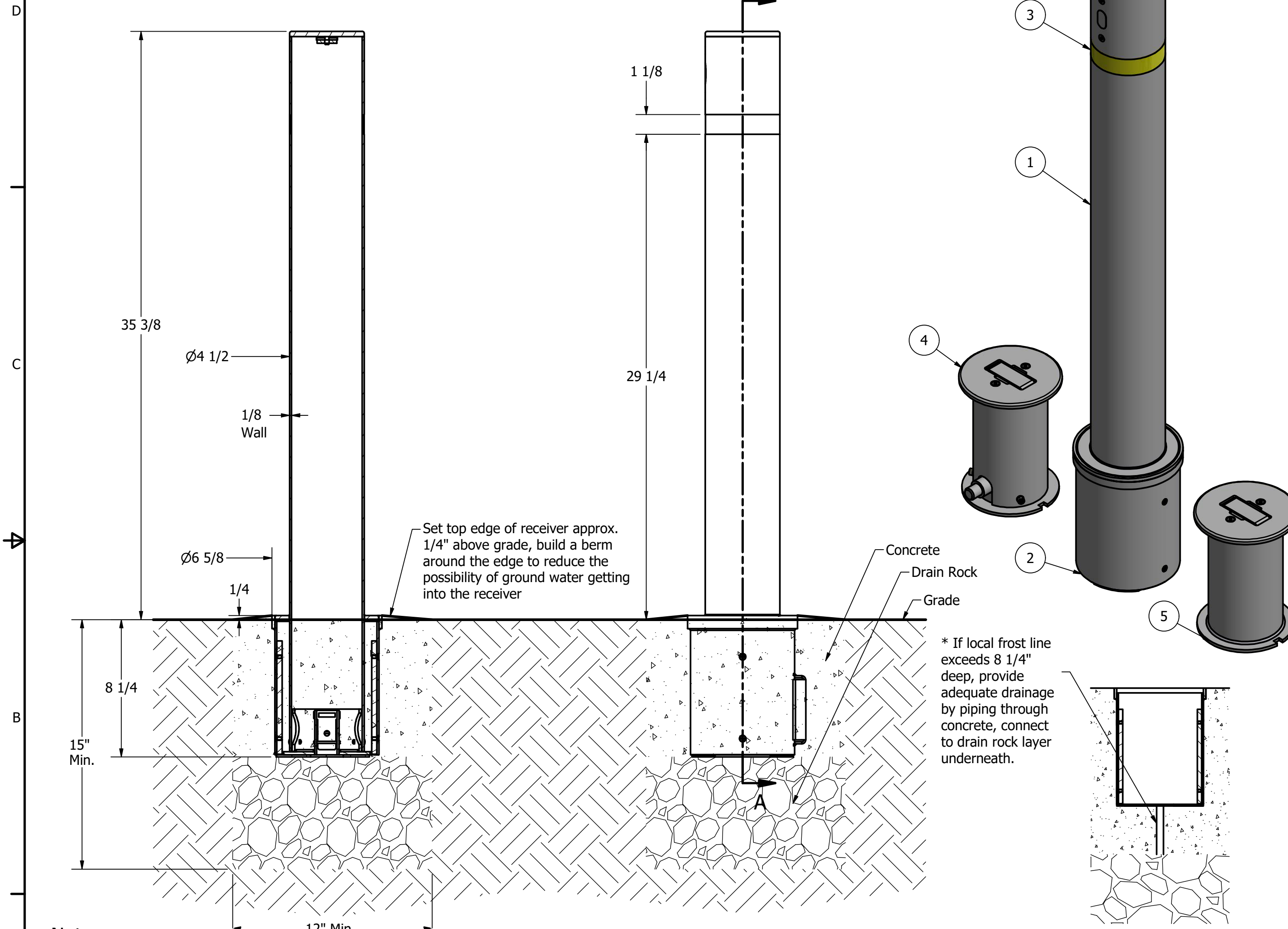


# Bollard, Model R-9464

Number of keys included: 2



## General Description:

The R-9464 stainless steel removable bollard features internal locking hardware to ensure quick and easy access to restricted areas. Elevated key access prevents dirt and debris buildup when placed in dusty, particle-filled environments. This contemporary, versatile design is highly visible and available with different mounting options, including retractable and fixed styles. Sleek aesthetics suit any modern building or landscape. Composed of high-quality 316 grade stainless steel with #6 satin finish for the best corrosion resistance. Optional reflective stripes offered in 4 colors. Mounting covers to eliminate tripping hazards and debris can be ordered separately.

For more information on bollard post installation, please visit: [www.reliance-foundry.com/bollard/installation-bollards](http://www.reliance-foundry.com/bollard/installation-bollards)

## Specifications:

Height: 35 3/8"

Base Diameter: 4 1/2"

Weight: 28 lbs (Bollard Only)

Material: Stainless Steel 316

Finish: Satin Surface Finish Buffed No. 6

### Reflective Tape Options:

- Yellow
- White
- Red
- Blue
- None (Default)

## Notes:

- Embedment details are for reference illustration only. Minimum foundation sizes depend on local soil conditions, weather conditions, and engineering requirements.
- Bollard is provided as shown, with parts listed below. Concrete foundation and/or installation not provided by Reliance Foundry.
- This drawing is not drawn to scale. Dimensions provided herein is for reference only. Please consult Reliance Foundry sales professionals if any dimension is critical to your particular installation.
- Reliance Foundry reserves the right to amend design and specifications without prior notice for product improvement.

### SECTION A-A

| PARTS LIST |     |                            |   |                     |        |
|------------|-----|----------------------------|---|---------------------|--------|
| ITEM       | QTY | PART NUMBER                | DESCRIPTION   | MATERIAL            | WEIGHT |
| 1          | 1   | R9464                      | R9464 Removable Bollard Assembly (Key x 2 included)         | Stainless Steel 316 | 28 lbs |
| 2          | 1   | R9464R                     | R9464R Removable Bollard Receiver                           | Steel HDG           | 8 lbs  |
| 3          | 1   | Reflective Tape (Optional) | Optional Reflective Tape, Max. 1-1/8" Width                 | Plastic             |        |
| 4          | 1   | R9464RC (Optional)         | R9464RC Optional Lockable Receiver Cover (Key x 2 included) | Stainless Steel 316 | 12 lbs |
| 5          | 1   | R9464RCN (Optional)        | R9464RCN Optional Non-lockable Receiver Cover               | Stainless Steel 316 | 9 lbs  |

**RELIANCE FOUNDRY**  
SINCE 1925

Unit 207, 6450 - 148 Street, Surrey, BC V3S 7G7, Canada  
1-877-789-3245 info@reliance-foundry.com  
[www.reliance-foundry.com](http://www.reliance-foundry.com)

**Bollard R-9464**

|      |        |     |
|------|--------|-----|
| SIZE | DWG NO | REV |
| C    | R9464  | C   |