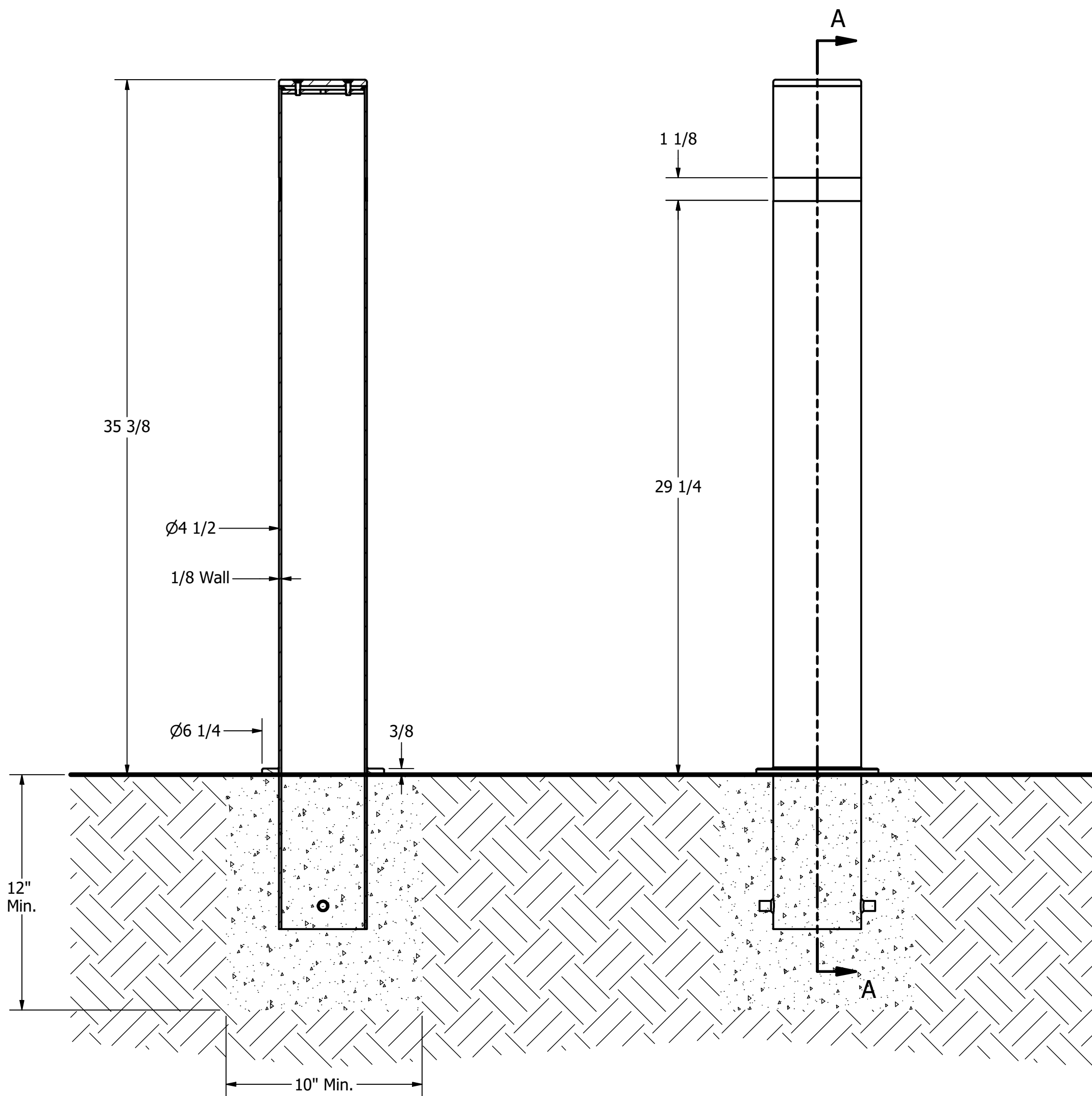


Bollard, Model R-9460



General Description:

The R-9460 stainless steel bollard can be embedded in concrete for fixed, secure installation. Alternative mountings are also possible for retractable and removable styles. The simple, clean aesthetic suits a wide range of infrastructure, including modern architecture. Composed of reliable 316 stainless steel with #6 satin finish to prevent corrosion and wear. Optional reflector stripes offered in 1 of 4 standard colors.

For more information on bollard post installation, please visit: www.reliance-foundry.com/bollard/installation-bollards

Specifications:

Height: 35 3/8"

Base Diameter: 4 1/2"

Weight: 24 lbs

Material: Stainless Steel 316

Finish: Satin Surface Finish Buffed No. 6

Reflective Tape Options:

- Yellow
- White
- Red
- Blue
- None (Default)

Notes:

SECTION A-A

- Embedment details are for reference illustration only. Minimum foundation sizes depend on local soil conditions, weather conditions, and engineering requirements.
- Bollard is provided as shown, with parts listed below. Concrete foundation and/or installation not provided by Reliance Foundry.
- This drawing is not drawn to scale. Dimensions provided herein is for reference only. Please consult Reliance Foundry sales professionals if any dimension is critical to your particular installation.
- Reliance Foundry reserves the right to amend design and specifications without prior notice for product improvement.

| PARTS LIST | | | | | |
|------------|-----|----------------------------|---|---------------------|--------|
| ITEM | QTY | PART NUMBER | DESCRIPTION | MATERIAL | WEIGHT |
| 1 | 1 | R9460 | R9460 Fixed Bollard | Stainless Steel 316 | 24 lbs |
| 2 | 1 | Reflective Tape (Optional) | Optional Reflective Tape, Max. 1-1/8" Width | Plastic | |

RELIANCE FOUNDRY
SINCE 1925

Unit 207, 6450 - 148 Street, Surrey, BC V3S 7G7, Canada
1-877-789-3245 info@reliance-foundry.com
www.reliance-foundry.com

| | | | |
|-----------------------|--------|-----|--|
| TITLE | | | |
| Bollard R-9460 | | | |
| SIZE | DWG NO | REV | |
| C | R9460 | C | |