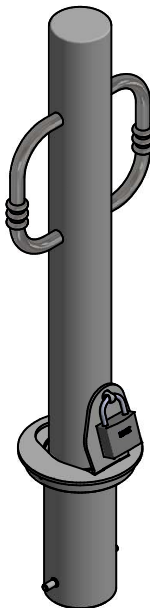
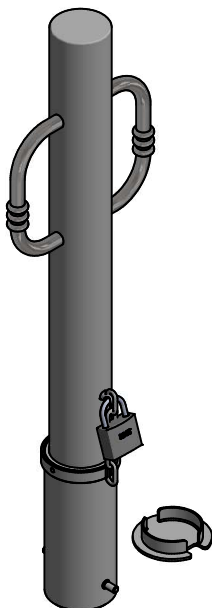


Bollard Post, Model R-8908

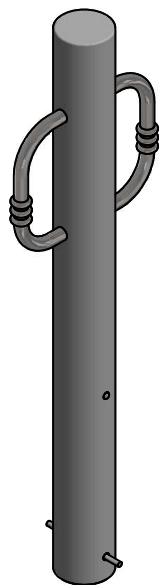
Removable Receiver with Lid
(for detail, see sheet 2 of 7)



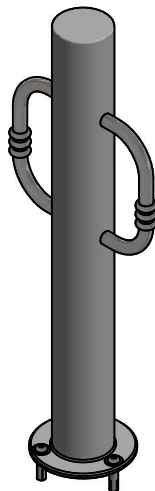
Removable Receiver with Chain
(for detail, see sheet 3 of 7)



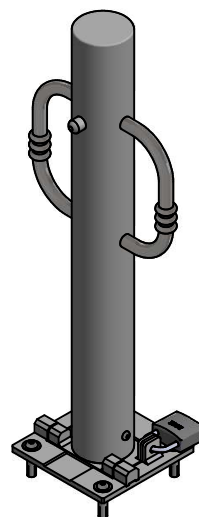
Fixed Embedded Mount
(for detail, see sheet 4 of 7)



Flanged Surface Mount
(for detail, see sheet 5 of 7)



Fold Down Mount
(for detail, see sheet 6 of 7)



5 Available Mounting Options

General Description:

The R-8908 Stainless Steel Bollard with Bike Arms features a clean, versatile design and a range of custom mounting options, making it suitable for any site location. R-8908 bollards are made from high-quality 316-grade stainless steel to withstand corrosive outdoor environments. Optional reflector stripes are available. Select from several fixed and removable mounting options: concrete embedment, bolt-down flange, removable receivers and fold-down mountings.

For more information on bollard post installation, please visit: www.reliance-foundry.com/bollard/installation-bollards

Specifications:

Height: 36" (Above Grade)

Base Diameter: 4 3/8"

Weight: 37 lbs

Material: Stainless Steel 316

Finish Options:

- ⊙ Satin Surface Finish Buffed No. 6
 - Polyester Powder Coated (Optional)
- See Reliance Foundry's standard color options at www.reliance-foundry.com/bollard/colors-bollards

5/16" Chain Accessories Installation Sample
(for detail, see sheet 7 of 7)



Optional Chain Accessories Available



Chain Eye 3/8"
(Powder Coated)



Quick Link Connector
(Powder Coated)



Bollard Chain 5/16"
(Powder Coated)

RELIANCE FOUNDRY
SINCE 1925

Unit 207, 6450 - 148 Street, Surrey, BC V3S 7G7, Canada
1-877-789-3245 info@reliance-foundry.com
www.reliance-foundry.com

TITLE

Bollard Post, Model R-8908

SIZE
C

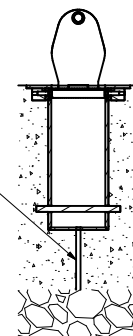
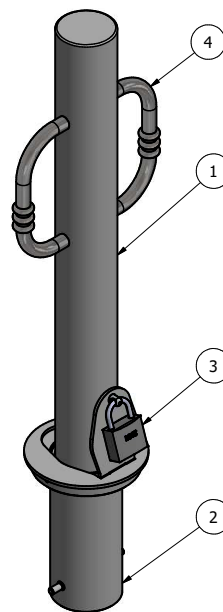
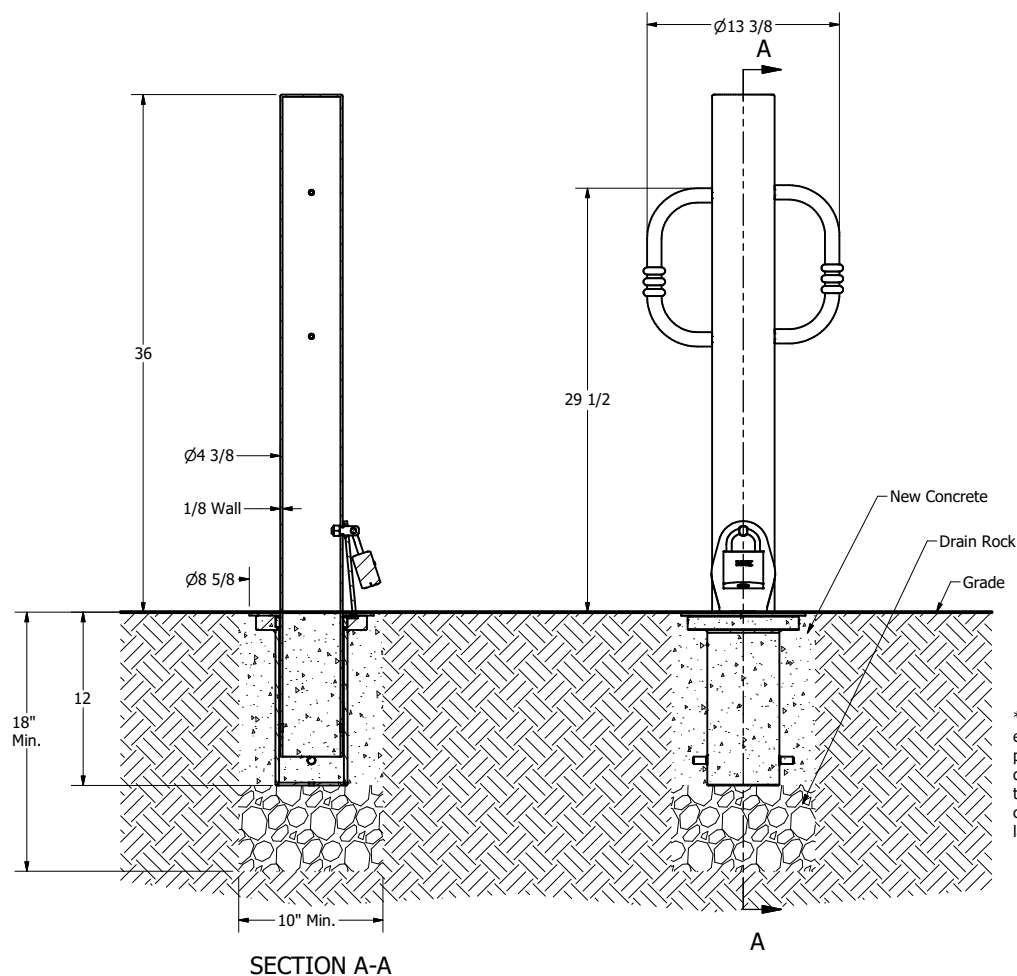
DWG NO
R8908_R8901R

REV
A1

NOT TO SCALE

SHEET 1 OF 7

Bollard Post, Model R-8908



General Description:

The R-8908 Stainless Steel Bollard with Bike Arms features a clean, versatile design and a range of custom mounting options, making it suitable for any site location. R-8908 bollards are made from high-quality 316-grade stainless steel to withstand corrosive outdoor environments. Optional reflector stripes are available. Select from several fixed and removable mounting options: concrete embedment, bolt-down flange, removable receivers and fold-down mountings.

For more information on bollard post installation, please visit: www.reliance-foundry.com/bollard/installation-bollards

Specifications:

Height: 36" (Above Grade)

Base Diameter: 4 3/8"

Weight: 37 lbs

Material: Stainless Steel 316

Finish Options:

- Satin Surface Finish Buffed No. 6
 - Polyester Powder Coated (Optional)
- See Reliance Foundry's standard color options at www.reliance-foundry.com/bollard/colors-bollards

Mount Options:

- ✓ Removable Receiver with Lid (see sheet 2 of 7)
- Removable Receiver with Chain (see sheet 3 of 7)
- Fixed Embedded Mount (see sheet 4 of 7)
- Flanged Surface Mount (see sheet 5 of 7)
- Fold Down Mount (see sheet 6 of 7)
- Optional Chain Accessory (see sheet 7 of 7)

Removable Receiver with Lid

(For important detail regarding installation with OPTIONAL bollard chain accessories, refer to sheet 7 of 7)

Notes:

- Embedment details are for reference illustration only. Minimum foundation sizes depend on local soil conditions, weather conditions, and engineering requirements.
- Bollard post is provided as shown, with material detailed in legend below. Concrete, foundation and/or installation ordered separately or provided by others.
- This drawing is not drawn to scale. Dimensions provided herein is for reference only. Please consult Reliance Foundry sales professionals if any dimension is critical to your particular installation.
- Reliance Foundry reserves the right to amend design and specifications without prior notice for product improvement.

PARTS LIST					
ITEM	QTY	PART NUMBER	DESCRIPTION	MATERIAL	WEIGHT
1	1	R8908 Romovable Assembly	Bollard R8908 Removable Assembly	Stainless Steel 316	32 lbs
2	1	R8901R Receiver	R8901R Receiver Assembly w/ Lid	Stainless Steel 316	25 lbs
3	1	Padlock (Optional)	Optional Padlock (Brass or Stainless Steel)	Choice of Brass or Stainless Steel	5/8 lbs
4	2	R7100-5	Bike Arm R7100-5	Stainless Steel 316	2 3/8 lbs

RELIANCE FOUNDRY
SINCE 1925

Unit 207, 6450 - 148 Street, Surrey, BC V3S 7G7, Canada
1-877-789-3245 info@reliance-foundry.com
www.reliance-foundry.com

TITLE

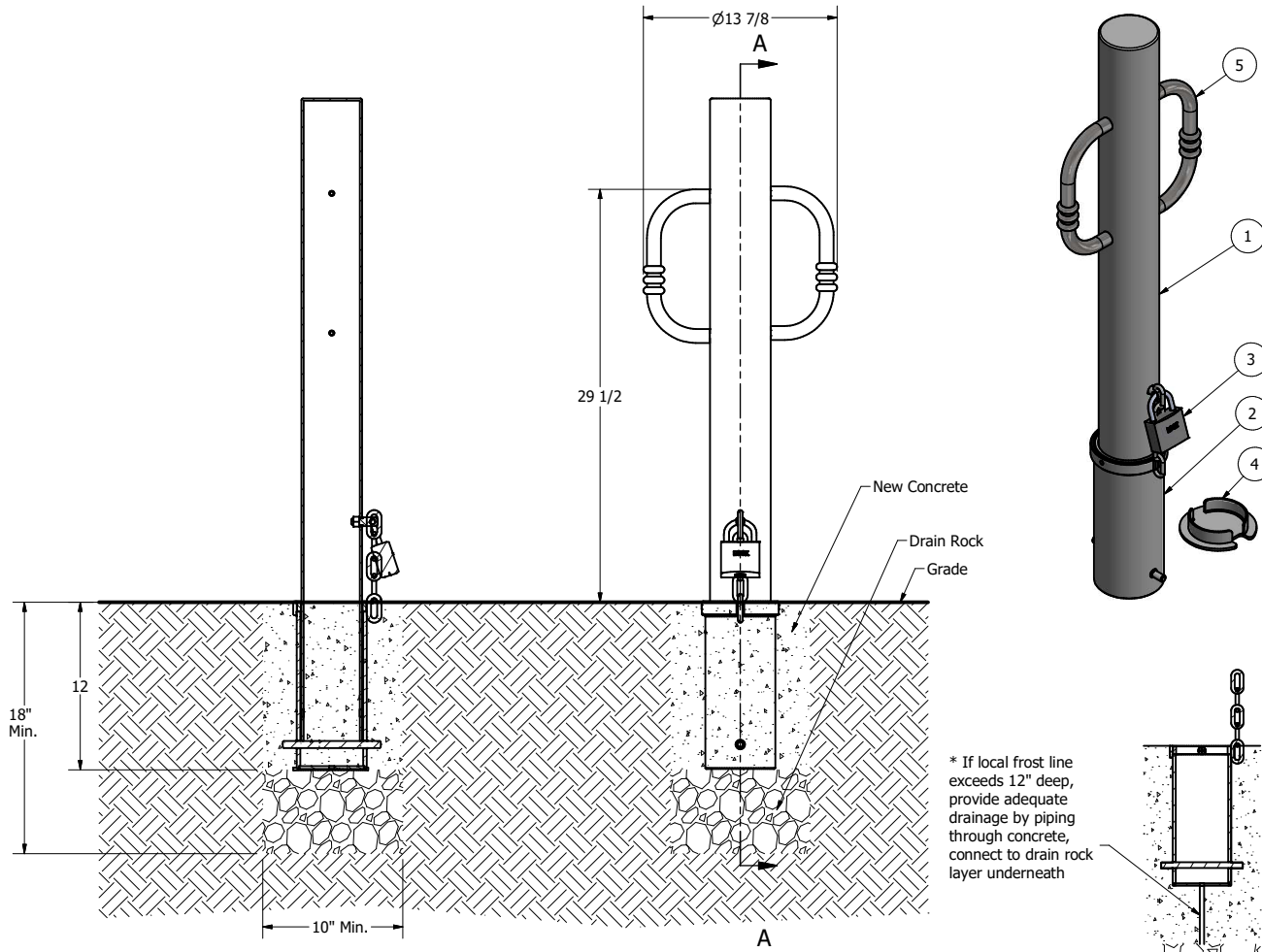
Bollard Post, Model R-8908

SIZE
C

DWG NO
R8908_R8901R

REV
A1

Bollard Post, Model R-8908



SECTION A-A
Removable Receiver with Chain

(For important detail regarding installation with *OPTIONAL* bollard chain accessories, refer to sheet 7 of 7)

Notes:

- Embedment details are for reference illustration only. Minimum foundation sizes depend on local soil conditions, weather conditions, and engineering requirements.
- Bollard post is provided as shown, with material detailed in legend below. Concrete, foundation and/or installation ordered separately or provided by others.
- This drawing is not drawn to scale. Dimensions provided herein is for reference only. Please consult Reliance Foundry sales professionals if any dimension is critical to your particular installation.
- Reliance Foundry reserves the right to amend design and specifications without prior notice for product improvement.

PARTS LIST					
ITEM	QTY	PART NUMBER	DESCRIPTION	MATERIAL	WEIGHT
1	1	R8908 Removable Assembly	Bollard R8908 Removable Assembly	Stainless Steel 316	32 lbs
2	1	R8902R Receiver	R8902R Receiver Assembly	Stainless Steel 316	17 lbs
3	1	Padlock (Optional)	Optional Padlock (Brass or Stainless Steel)	Choice of Brass or Stainless Steel	5/8 lbs
4	1	R8902RC Receiver Cover (Optional)	Optional R8902RC Receiver Cover	Stainless Steel 316	2 lbs
5	2	R7100-5	R7100-5 Bike Arm	Stainless Steel 316	2 3/8 lbs

General Description:

The R-8908 Stainless Steel Bollard with Bike Arms features a clean, versatile design and a range of custom mounting options, making it suitable for any site location. R-8908 bollards are made from high-quality 316-grade stainless steel to withstand corrosive outdoor environments. Optional reflector stripes are available. Select from several fixed and removable mounting options: concrete embedment, bolt-down flange, removable receivers and fold-down mountings.

For more information on bollard post installation, please visit: www.reliance-foundry.com/bollard/installation-bollards

Specifications:

Height: 36" (Above Grade)

Base Diameter: 4 3/8"

Weight: 37 lbs Material: Stainless Steel

316

Finish Options:

- Satin Surface Finish Buffed No. 6
 - Polyester Powder Coated (Optional)
- See Reliance Foundry's standard color options at www.reliance-foundry.com/bollard/colors-bollards

Mount Options:

- Removable Receiver with Lid (see sheet 2 of 7)
- ✓ Removable Receiver with Chain (see sheet 3 of 7)
- Fixed Embedded Mount (see sheet 4 of 7)
- Flanged Surface Mount (see sheet 5 of 7)
- Fold Down Mount (see sheet 6 of 7)
- Optional Chain Accessory (see sheet 7 of 7)

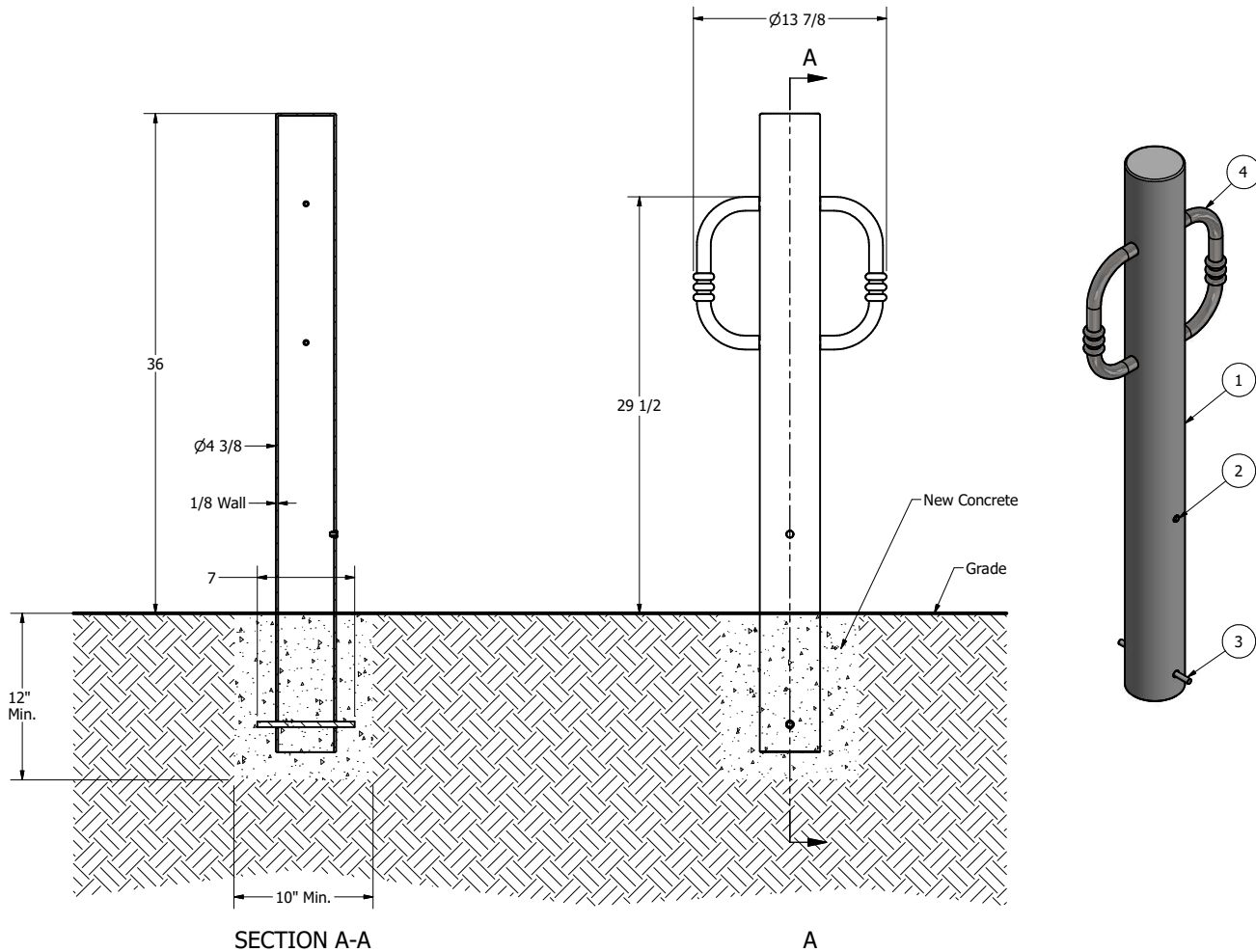
RELIANCE FOUNDRY
SINCE 1925

Unit 207, 6450 - 148 Street, Surrey, BC V3S 7G7, Canada
1-877-789-3245 info@reliance-foundry.com
www.reliance-foundry.com

Bollard Post, Model R-8908

SIZE	DWG NO	REV
C	R8908_R8902R	A1

Bollard Post, Model R-8908



Fixed Installation in New Concrete

Notes:

- Embedment details are for reference illustration only. Minimum foundation sizes depend on local soil conditions, weather conditions, and engineering requirements.
- Bollard post is provided as shown, with material detailed in legend below. Concrete, foundation and/or installation ordered separately or provided by others.
- This drawing is not drawn to scale. Dimensions provided herein is for reference only. Please consult Reliance Foundry sales professionals if any dimension is critical to your particular installation.
- Reliance Foundry reserves the right to amend design and specifications without prior notice for product improvement.

PARTS LIST					
ITEM	QTY	PART NUMBER	DESCRIPTION	MATERIAL	WEIGHT
1	1	R8908 Fixed Bollard	R8908 Fixed Bollard Body	Stainless Steel 316	32 lbs
2	1	Polyethylene Plug 1/2"	Polyethylene Plug 1/2"	Polyethylene Plastic	
3	1	Steel Rebar	Steel Rebar 10 mm x 7"	Steel Epoxy Coated	3/8 lbs
4	2	R-7100-5 Bike Arm	R-7100-5 Bike Arm	Stainless Steel (Optional Powder Coating)	2 3/8 lbs

General Description:

The R-8908 Stainless Steel Bollard with Bike Arms features a clean, versatile design and a range of custom mounting options, making it suitable for any site location. R-8908 bollards are made from high-quality 316-grade stainless steel to withstand corrosive outdoor environments. Optional reflector stripes are available. Select from several fixed and removable mounting options: concrete embedment, bolt-down flange, removable receivers and fold-down mountings. For more information on bollard post installation, please visit: www.reliance-foundry.com/bollard/installation-bollards

Specifications:

Height: 36" (Above Grade)
 Base Diameter: 4 3/8"
 Weight: 32 lbs (Bollard Post Full Length)
 Material: Stainless Steel 316
 Finish Options:

- Satin Surface Finish Buffed No. 6
 - Polyester Powder Coated (Optional)
- See Reliance Foundry's standard color options at www.reliance-foundry.com/bollard/colors-bollards

Mount Options:

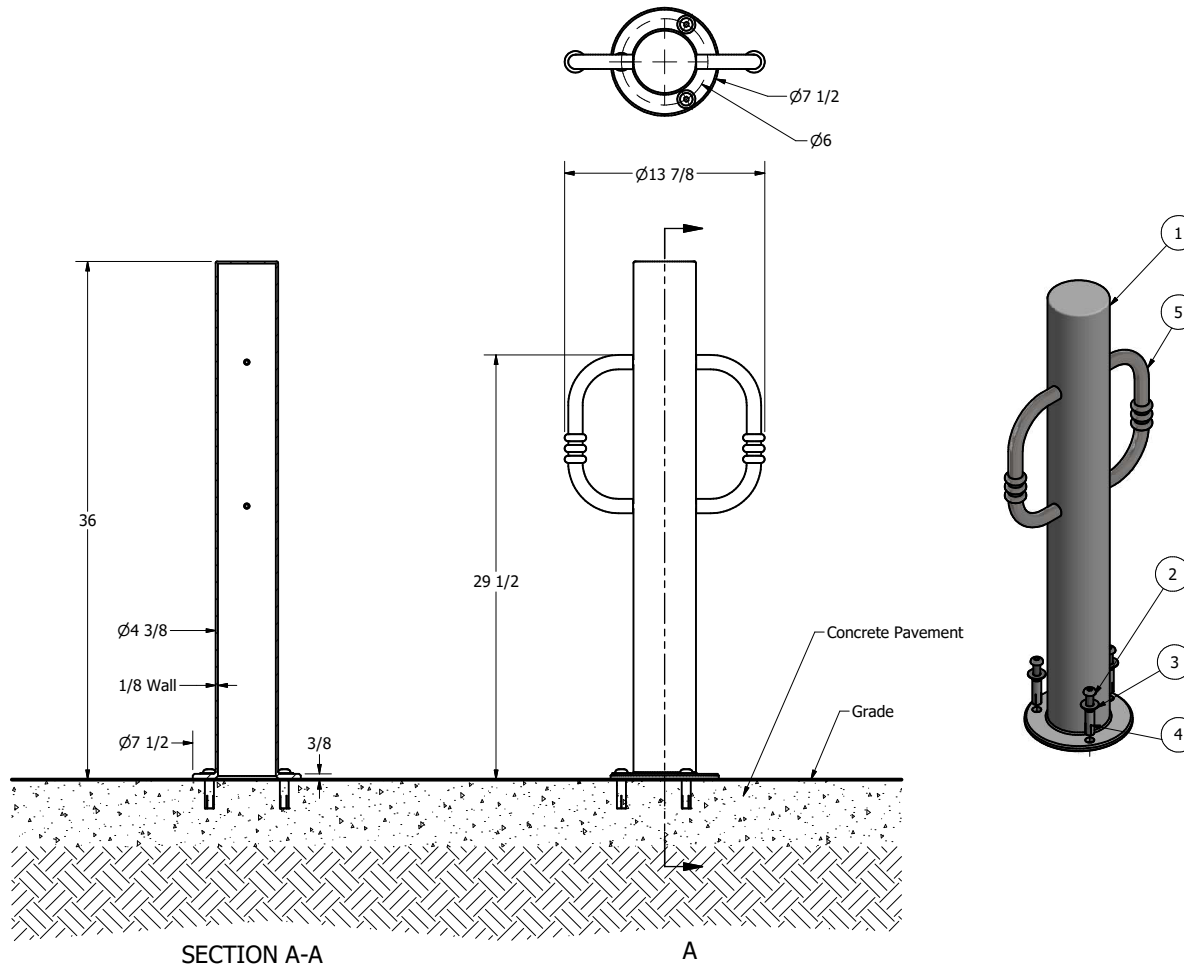
- Removable Receiver with Lid (see sheet 2 of 7)
- Removable Receiver with Chain (see sheet 3 of 7)
- ✓ **Fixed Embedded Mount** (see sheet 4 of 7)
- Flanged Surface Mount (see sheet 5 of 7)
- Fold Down Mount (see sheet 6 of 7)
- Optional Chain Accessory (see sheet 7 of 7)

RELIANCE FOUNDRY
 SINCE 1925

Unit 207, 6450 - 148 Street, Surrey, BC V3S 7G7, Canada
 1-877-789-3245 info@reliance-foundry.com
www.reliance-foundry.com

TITLE			
Bollard Post, Model R-8908			
SIZE	DWG NO	REV	
C	R8908	A1	
NOT TO SCALE		SHEET 4 OF 7	

Bollard Post, Model R-8908



SECTION A-A

A

Flanged / Surface Mount

Notes:

- Embedment details are for reference illustration only. Minimum foundation sizes depend on local soil conditions, weather conditions, and engineering requirements.
- Bollard post is provided as shown, with material detailed in legend below. Concrete, foundation and/or installation ordered separately or provided by others.
- This drawing is not drawn to scale. Dimensions provided herein is for reference only. Please consult Reliance Foundry sales professionals if any dimension is critical to your particular installation.
- Reliance Foundry reserves the right to amend design and specifications without prior notice for product improvement.

General Description:

The R-8908 Stainless Steel Bollard with Bike Arms features a clean, versatile design and a range of custom mounting options, making it suitable for any site location. R-8908 bollards are made from high-quality 316-grade stainless steel to withstand corrosive outdoor environments. Optional reflector stripes are available. Select from several fixed and removable mounting options: concrete embedment, bolt-down flange, removable receivers and fold-down mountings. For more information on bollard post installation, please visit: www.reliance-foundry.com/bollard/installation-bollards

Specifications:

Height: 36" (Above Grade)
 Base Diameter: 4 3/8"
 Weight: 32 lbs (Bollard Post Full Length)
 Material: Stainless Steel 316

Finish Options:

- Satin Surface Finish Buffed No. 6
 - Polyester Powder Coated (Optional)
- See Reliance Foundry's standard color options at www.reliance-foundry.com/bollard/colors-bollards

Mount Options:

- Removable Receiver with Lid (see sheet 2 of 7)
- Removable Receiver with Chain (see sheet 3 of 7)
- Fixed Embedded Mount (see sheet 4 of 7)
- ✓ Flanged Surface Mount (see sheet 5 of 7)
- Fold Down Mount (see sheet 6 of 7)
- Optional Chain Accessory (see sheet 7 of 7)

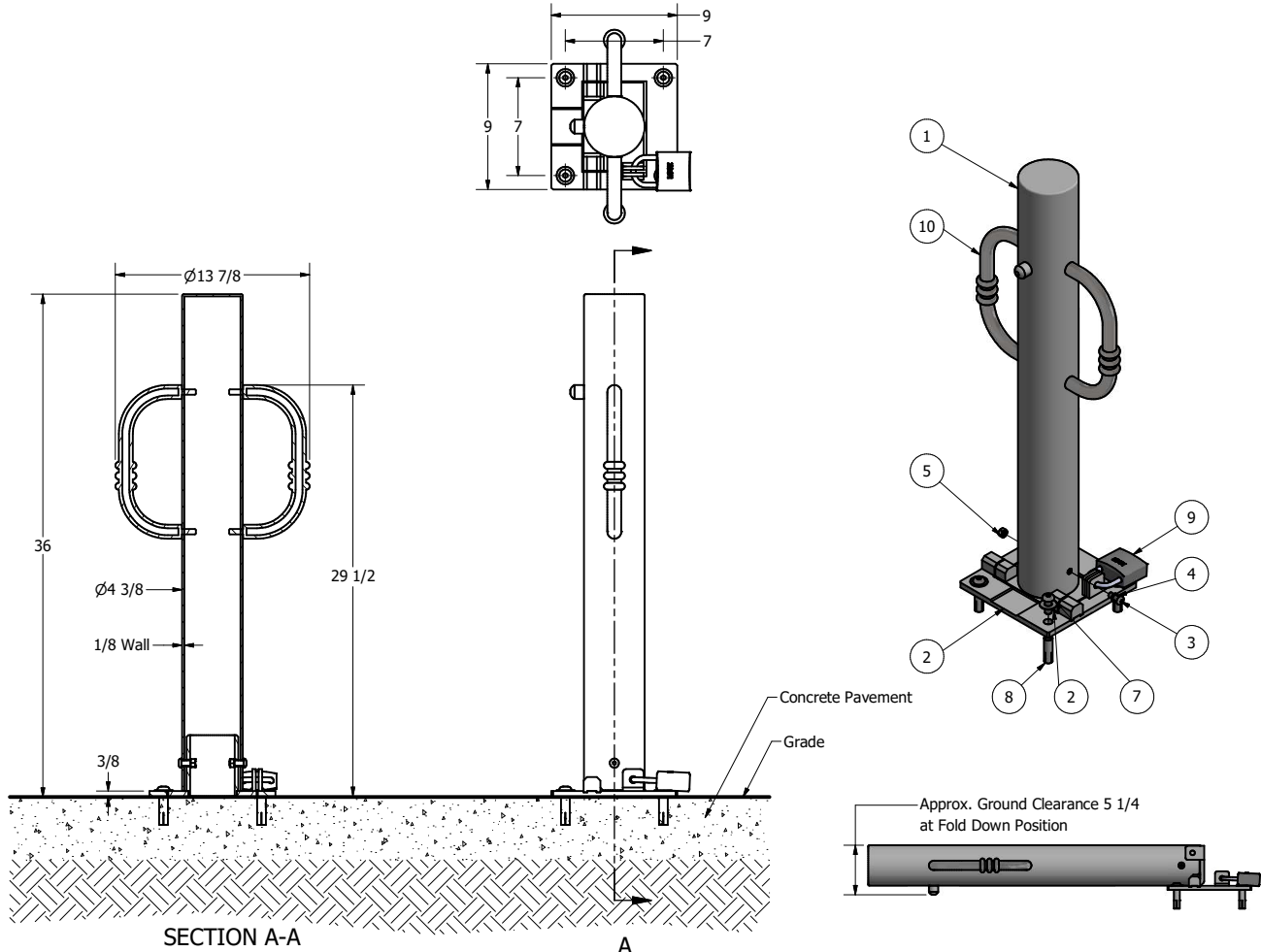
RELIANCE FOUNDRY
 SINCE 1925

Unit 207, 6450 - 148 Street, Surrey, BC V3S 7G7, Canada
 1-877-789-3245 info@reliance-foundry.com
www.reliance-foundry.com

PARTS LIST					
ITEM	QTY	PART NUMBER	DESCRIPTION	MATERIAL	WEIGHT
1	1	R8908 Flanged Bollard	R8908 Flanged Bollard Body	Stainless Steel 316	31 lbs
2	3	Button Head Bolt 1/2" x 1 1/4"	Hexagon Socket Button Head Cap Bolt 1/2" x 1 1/4" - requires 5/16" hex key	Stainless Steel	1/8 lbs
3	3	Stainless Steel Washer 1/2"	Stainless Steel Washer 1/2" OD 1 1/4" Thick .05"	Stainless Steel	
4	3	Drop-in Concrete Insert 1/2"	Drop-in Concrete Insert 1/2" - requires 5/8" x 2" hole (dia. x depth)	Steel Plated	1/8 lbs
5	2	R-7100-5 Bike Arm	R-7100-5 Bike Arm	Stainless Steel (Optional Powder Coating)	2 3/8 lbs

TITLE			
Bollard Post, Model R-8908			
SIZE	DWG NO	REV	
C	R8908	A1	

Bollard Post, Model R-8908



Fold Down Mount

Notes:

- Embedment details are for reference illustration only. Minimum foundation sizes depend on local soil conditions, weather conditions, and engineering requirements.
- Bollard post is provided as shown, with material detailed in legend below. Concrete, foundation and/or installation ordered separately or provided by others.
- This drawing is not drawn to scale. Dimensions provided herein is for reference only. Please consult Reliance Foundry sales professionals if any dimension is critical to your particular installation.
- Reliance Foundry reserves the right to amend design and specifications without prior notice for product improvement.

General Description:

The R-8908 Stainless Steel Bollard with Bike Arms features a clean, versatile design and a range of custom mounting options, making it suitable for any site location. R-8908 bollards are made from high-quality 316-grade stainless steel to withstand corrosive outdoor environments. Optional reflector stripes are available. Select from several fixed and removable mounting options: concrete embedment, bolt-down flange, removable receivers and fold-down mountings.
 For more information on bollard post installation, please visit: www.reliance-foundry.com/bollard/installation-bollards

Specifications:

- Height: 36" (Above Grade)
- Base Diameter: 4 3/8"
- Weight: 32 lbs (Bollard Post Full Length)
- Material: Stainless Steel 316
- Finish Options:

- Satin Surface Finish Buffed No. 6
 - Polyester Powder Coated (Optional)
- See Reliance Foundry's standard color options at www.reliance-foundry.com/bollard/colors-bollards

Mount Options:

- Removable Receiver with Lid (see sheet 2 of 7)
- Removable Receiver with Chain (see sheet 3 of 7)
- Fixed Embedded Mount (see sheet 4 of 7)
- Flanged Surface Mount (see sheet 5 of 7)
- ✓ **Fold Down Mount** (see sheet 6 of 7)
- Optional Chain Accessory (see sheet 7 of 7)



Unit 207, 6450 - 148 Street, Surrey, BC V3S 7G7, Canada
 1-877-789-3245 info@reliance-foundry.com
www.reliance-foundry.com

Bollard Post, Model R-8908

PARTS LIST					
ITEM	QTY	PART NUMBER	DESCRIPTION	MATERIAL	WEIGHT
1	1	R8908 Fold Down Assembly	R8908 Fold Down Bollard Assembly	Stainless Steel 316	28 lbs
2	1	R7950A Fold Down Base	R7950A Fold Down Base Assembly	Steel HDG	15 lbs
3	2	Button Head Bolt 3/8" x 1"	Hexagon Socket Button Head Cap Bolt 3/8" x 1" - requires 7/32" hex key	Stainless Steel	
4	2	O-Ring 3/8"	Nitrile Rubber O-Ring 3/8"	Nitrile Rubber	
5	2	Hex Nut Nylon Lock 3/8"	Hex Nut Nylon Lock 3/8" - requires 9/16" wrench	Steel Plated Nylon Lock	
6	4	Button Head Bolt 1/2" x 1 1/4"	Hexagon Socket Button Head Cap Bolt 1/2" x 1 1/4" - requires 5/16" hex key	Stainless Steel	1/8 lbs
7	4	Stainless Steel Washer 1/2"	Stainless Steel Washer 1/2" OD 1 1/4" Thick .05"	Stainless Steel	
8	4	Drop-in Concrete Insert 1/2"	Drop-in Concrete Insert 1/2" - requires 5/8" x 2" hole (dia. x depth)	Steel Plated	1/8 lbs
9	1	Padlock (Optional)	Optional Padlock (Brass or Stainless Steel)	Choice of Brass or Stainless Steel	5/8 lbs
10	2	R-7100-5 Bike Arm	R-7100-5 Bike Arm	Stainless Steel 316	2 3/8 lbs

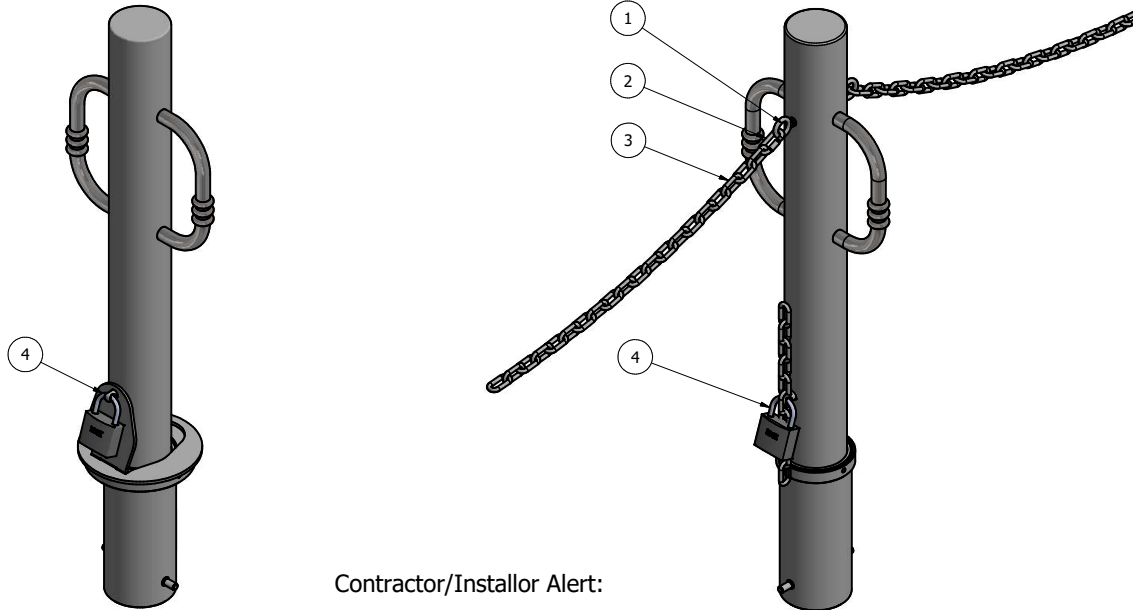
TITLE

Bollard Post, Model R-8908

SIZE: C DWG NO: R8908_R7950A REV: A1

NOT TO SCALE SHEET 6 OF 7

Bollard Post, Model R-8908



Contractor/Installor Alert:

Please give consideration to the location of the chain eye and the padlock pin when installing removable bollard receiver. It is important that the removable bollard receiver padlock pin is oriented in the same direction as the chain is intended to flow.

Optional Chain Accessories Installation Details

PARTS LIST			
ITEM	PART NUMBER	DESCRIPTION	MATERIAL
1	Chain Eye 3/8" (Optional)	Optional Chain Eye 3/8"	Steel Powder Coated
2	Quick Link Connector (Optional)	Optional Quick Link Connector	Steel Powder Coated
3	Chain 5/16" (Optional)	Optional Chain 5/16" (Sold by Length)	Steel Powder Coated
4	Padlock (Optional)	Optional Padlock (Brass or Stainless Steel)	Choice of Brass or Stainless Steel

General Description:

The R-8908 Stainless Steel Bollard with Bike Arms features a clean, versatile design and a range of custom mounting options, making it suitable for any site location. R-8908 bollards are made from high-quality 316-grade stainless steel to withstand corrosive outdoor environments. Optional reflector stripes are available. Select from several fixed and removable mounting options: concrete embedment, bolt-down flange, removable receivers and fold-down mountings. For more information on bollard post installation, please visit: www.reliance-foundry.com/bollard/installation-bollards

Specifications:

Height: 36" (Above Grade)
 Base Diameter: 4 3/8"
 Weight: 32 lbs (Bollard Post Full Length)
 Material: Stainless Steel 316

Finish Options:

- Satin Surface Finish Buffed No. 6
 - Polyester Powder Coated (Optional)
- See Reliance Foundry's standard color options at www.reliance-foundry.com/bollard/colors-bollards

Mount Options:

- Removable Receiver with Lid (see sheet 2 of 7)
- Removable Receiver with Chain (see sheet 3 of 7)
- Fixed Embedded Mount (see sheet 4 of 7)
- Flanged Surface Mount (see sheet 5 of 7)
- Fold Down Mount (see sheet 6 of 7)
- Optional Chain Accessory (see sheet 7 of 7)

RELIANCE FOUNDRY
 SINCE 1925

Unit 207, 6450 - 148 Street, Surrey, BC V3S 7G7, Canada
 1-877-789-3245 info@reliance-foundry.com
www.reliance-foundry.com

TITLE			
Bollard Post, Model R-8908			
SIZE	DWG NO	REV	
C	R8908_R8901R	A1	
NOT TO SCALE		SHEET 7 OF 7	