

|                            |
|----------------------------|
| Bollard Post, Model R-7901 |
|----------------------------|

A vertical metal post with a rounded, fluted top. Near the base, there is a horizontal ring. A padlock is attached to this ring, and a metal loop is also attached to the ring, possibly for a key or another lock mechanism. The post has a small hole near the bottom.

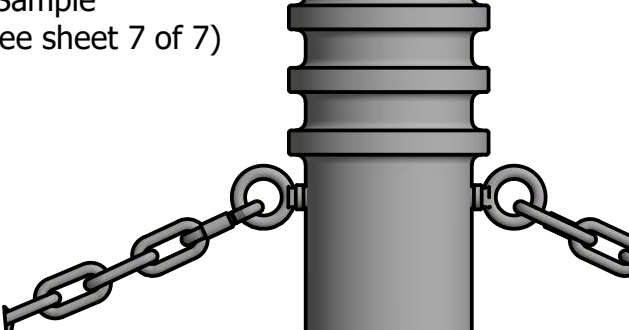
A vertical grey pipe with a rounded top. A padlock is attached to a ring on the pipe. The padlock is closed. A small circular cap is shown detached from the bottom of the pipe.

A 3D rendering of a vertical, cylindrical component, likely a probe or sensor. It has a flared top with three distinct rings and a small protrusion at the bottom. The component is shown in a perspective view, highlighting its cylindrical shape and the flared top.

For more information on bollard post installation, please visit:  
[www.reliance-foundry.com/bollard/installation-bollards](http://www.reliance-foundry.com/bollard/installation-bollards)

See Reliance Foundry's standard color options at [www.reliance-foundry.com/bollard/colors-bollards](http://www.reliance-foundry.com/bollard/colors-bollards)

5/16" Chain Accessories  
Installation Sample  
(for detail, see sheet 7 of 7)



A detailed illustration of a bolt and nut assembly. The bolt is a long, cylindrical metal rod with a hexagonal head at one end. A nut, which is a hexagonal metal ring with internal threads, is threaded onto the bolt. The assembly is shown in a perspective view, highlighting the metallic texture and the precise fit of the components.

Unit 207, 6450 - 148 Street, Surrey, BC V3S 7G7, Canada  
1-888-735-5680 info@reliance-foundry.com  
www.reliance-foundry.com

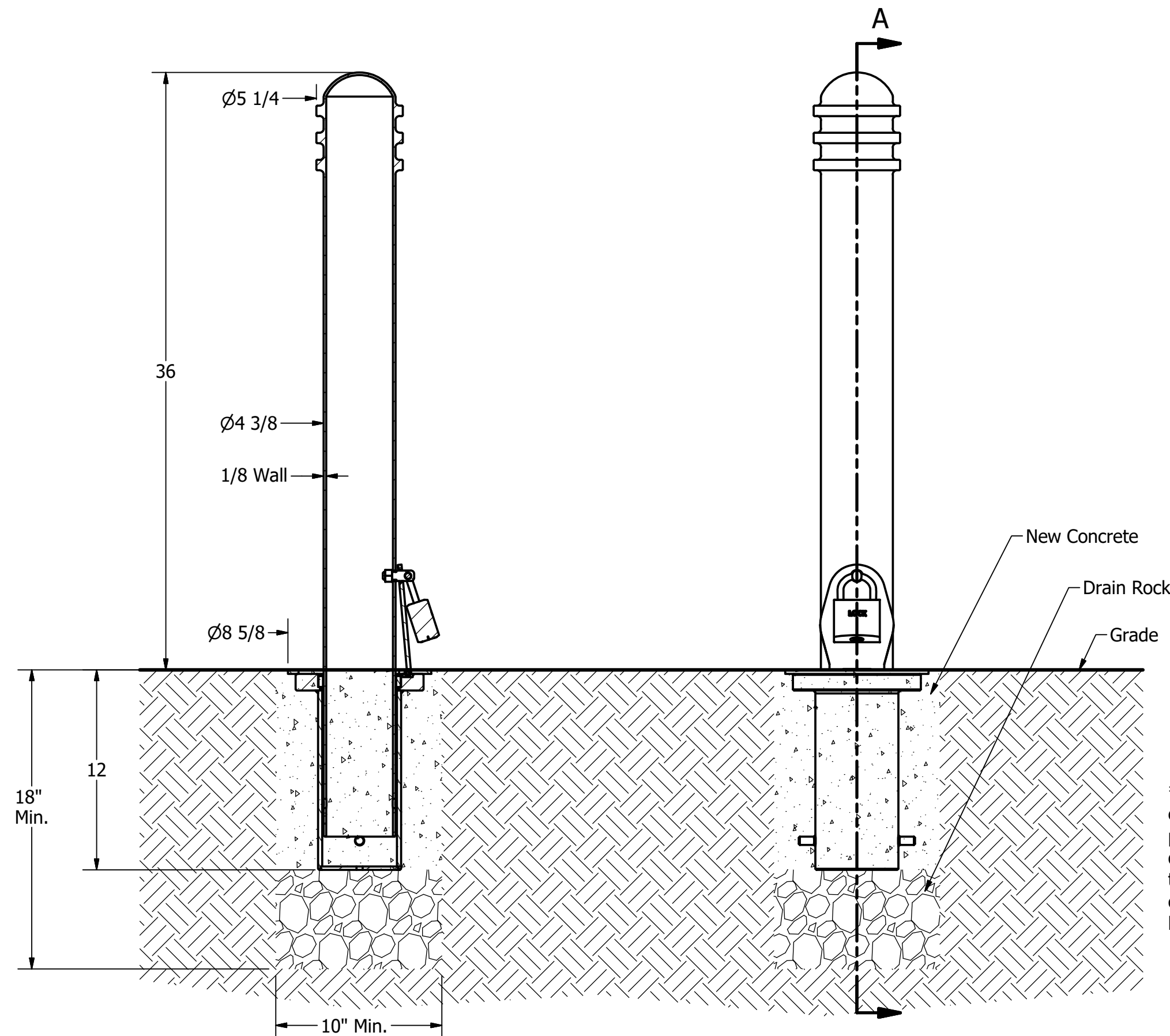
Bollard Post, Model R-7901

NOT TO SCALE

|        |  |
|--------|--|
| DWG NO |  |
| R-7901 |  |

SHEET 1 OF 7

# Bollard Post, Model R-7901

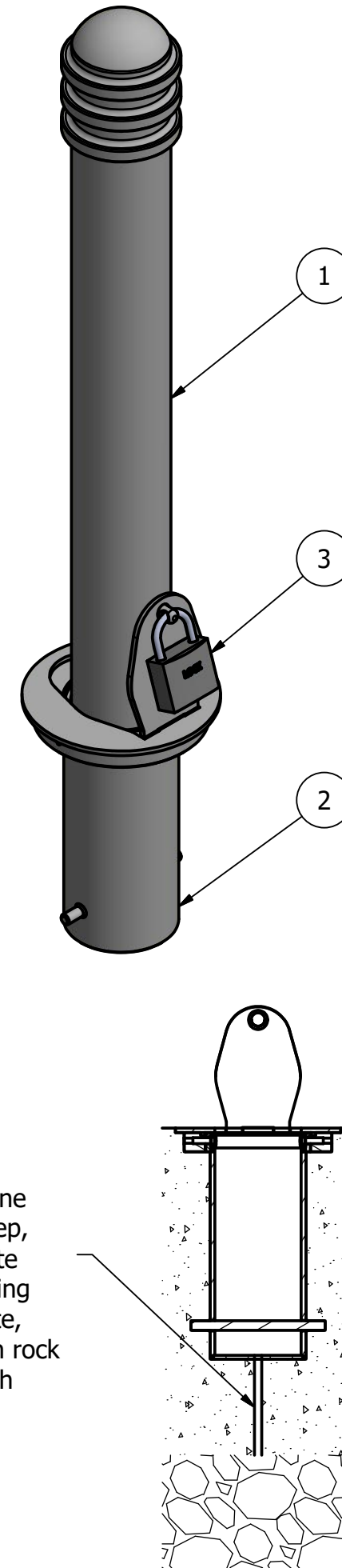


SECTION A-A

## Removable Receiver with Lid

(For important detail regarding installation with OPTIONAL bollard chain accessories, refer to sheet 7 of 7)

\* If local frost line exceeds 12" deep, provide adequate drainage by piping through concrete, connect to drain rock layer underneath



### General Description:

Clearly communicate intended routes and access regulations on your streetscape with the model R-7901 steel bollard from Reliance Foundry. Composed of standard steel and finished with a durable powder-coating, it is an aesthetically versatile device that will complement the architecture of almost any site. The R-7901 can be installed with a standard fixed mounting or with a removable or fold down mountings that allow temporary access to maintenance, delivery or emergency vehicles. Seven powder coating color options are available and the model R-7901 is kept in stock, available for immediate shipment.

For more information on bollard post installation, please visit: [www.reliance-foundry.com/bollard/installation-bollards](http://www.reliance-foundry.com/bollard/installation-bollards)

### Specifications:

Height: 36" ( Above Grade )

Base Diameter: 4 3/8"

Weight: 33 lbs ( Bollard Post Full Length )

Material: Steel ( ASTM A36 )

#### Finish Options:

- ✓ Polyester Powdercoated
- See Reliance Foundry's standard color options at [www.reliance-foundry.com/bollard/colors-bollards](http://www.reliance-foundry.com/bollard/colors-bollards)

### Mount Options:

- ✓ Removable Receiver with Lid (see sheet 2 of 7)
- Removable Receiver with Chain (see sheet 3 of 7)
- Fixed Embedded Mount (see sheet 4 of 7)
- Flanged Surface Mount (see sheet 5 of 7)
- Fold Down Mount (see sheet 6 of 7)
- Optional Chain Accessory (see sheet 7 of 7)

### Notes:

- Embedment details are for reference illustration only. Minimum foundation sizes depend on local soil conditions, weather conditions, and engineering requirements.
- Bollard post is provided as shown, with material detailed in legend below. Concrete, foundation and/or installation ordered separately or provided by others.
- This drawing is not drawn to scale. Dimensions provided herein is for reference only. Please consult Reliance Foundry sales professionals if any dimension is critical to your particular installation.
- Reliance Foundry reserves the right to amend design and specifications without prior notice for product improvement.

| PARTS LIST |     |                         |                                             |                                               |         |
|------------|-----|-------------------------|---------------------------------------------|-----------------------------------------------|---------|
| ITEM       | QTY | PART NUMBER             | DESCRIPTION                                 | MATERIAL                                      | WEIGHT  |
| 1          | 1   | R7901 Removable Bollard | R7901 Removable Bollard Assembly            | Steel Powder Coated                           | 33 lbs  |
| 2          | 1   | R7901R Receiver         | R7901R Receiver Assembly w/ Lid             | Galvanized Steel w/ 316 Stainless Steel Cover | 24 lbs  |
| 3          | 1   | Padlock (Optional)      | Optional Padlock (Brass or Stainless Steel) | Choice of Brass or Stainless Steel            | 5/8 lbs |

COPYRIGHT RESERVED THIS PLAN DRAWING AND DESIGN ARE, AND AT ALL TIMES REMAIN, THE EXCLUSIVE PROPERTY OF RELIANCE FOUNDRY CO. LTD.

RELIANCE FOUNDRY  
SINCE 1925

Unit 207, 6450 - 148 Street, Surrey, BC V3S 7G7, Canada  
1-888-735-5680 info@reliance-foundry.com  
[www.reliance-foundry.com](http://www.reliance-foundry.com)

TITLE

Bollard Post, Model R-7901

SIZE  
C

DWG NO  
R-7901

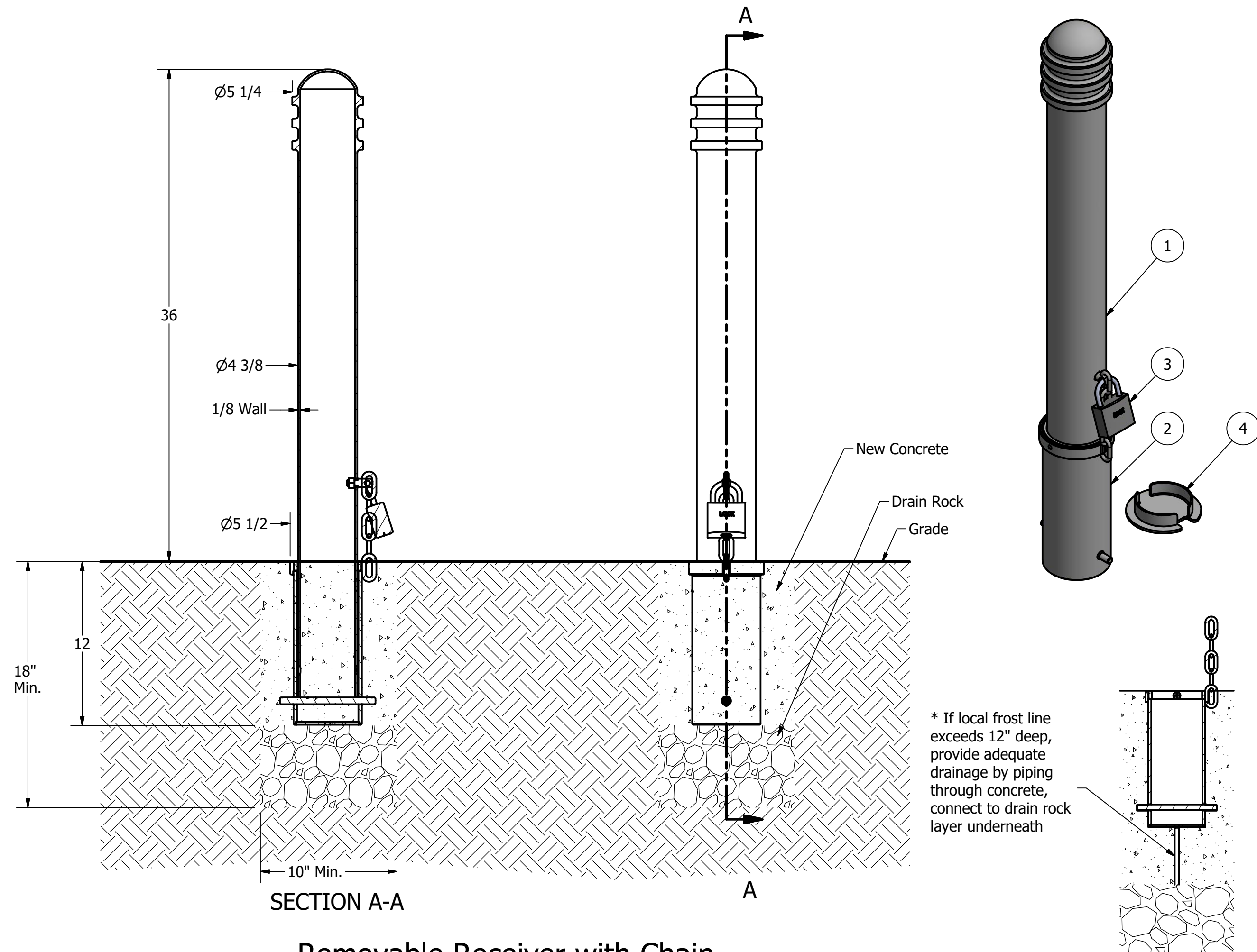
REV  
C1

NOT TO SCALE

SHEET 2 OF 7



Bollard Post, Model R-7901



**General Description:**

Clearly communicate intended routes and access regulations on your streetscape with the model R-7901 steel bollard from Reliance Foundry. Composed of standard steel and finished with a durable powder-coating, it is an aesthetically versatile device that will complement the architecture of almost any site. The R-7901 can be installed with a standard fixed mounting or with a removable or fold down mountings that allow temporary access to maintenance, delivery or emergency vehicles. Seven powder coating color options are available and the model R-7901 is kept in stock, available for immediate shipment.

For more information on bollard post installation, please visit: [www.reliance-foundry.com/bollard/installation-bollards](http://www.reliance-foundry.com/bollard/installation-bollards)

**Specifications:**

Height: 36" ( Above Grade )

Base Diameter: 4 3/8"

Weight: 33 lbs ( Bollard Post Full Length )

Material: Steel ( ASTM A36 )

**Finish Options:**

- ✓ Polyester Powdercoated

See Reliance Foundry's standard color options at [www.reliance-foundry.com/bollard/colors-bollards](http://www.reliance-foundry.com/bollard/colors-bollards)

**Mount Options:**

- Removable Receiver with Lid (see sheet 2 of 7)
- ✓ Removable Receiver with Chain (see sheet 3 of 7)
- Fixed Embedded Mount (see sheet 4 of 7)
- Flanged Surface Mount (see sheet 5 of 7)
- Fold Down Mount (see sheet 6 of 7)
- Optional Chain Accessory (see sheet 7 of 7)

**Removable Receiver with Chain**

(For important detail regarding installation with OPTIONAL bollard chain accessories, refer to sheet 7 of 7)

**Notes:**

- Embedment details are for reference illustration only. Minimum foundation sizes depend on local soil conditions, weather conditions, and engineering requirements.
- Bollard post is provided as shown, with material detailed in legend below. Concrete, foundation and/or installation ordered separately or provided by others.
- This drawing is not drawn to scale. Dimensions provided herein is for reference only. Please consult Reliance Foundry sales professionals if any dimension is critical to your particular installation.
- Reliance Foundry reserves the right to amend design and specifications without prior notice for product improvement.

| PARTS LIST |     |                                   |                                             |                                                |         |
|------------|-----|-----------------------------------|---------------------------------------------|------------------------------------------------|---------|
| ITEM       | QTY | PART NUMBER                       | DESCRIPTION                                 | MATERIAL                                       | WEIGHT  |
| 1          | 1   | R7901 Removable Bollard           | R7901 Removable Bollard Assembly            | Steel Powder Coated                            | 33 lbs  |
| 2          | 1   | R7902R Receiver                   | R7902R Receiver Assembly                    | Galvanized Steel, w/ 304 Stainless Steel Chain | 16 lbs  |
| 3          | 1   | Padlock (Optional)                | Optional Padlock (Brass or Stainless Steel) | Choice of Brass or Stainless Steel             | 5/8 lbs |
| 4          | 1   | R7902RC Receiver Cover (Optional) | Optional R7902RC Receiver Cover             | 304 Stainless Steel                            | 2 lbs   |

RELiance FOUNDRY

SINCE 1925

Unit 207, 6450 - 148 Street, Surrey, BC V3S 7G7, Canada  
1-888-735-5680 info@reliance-foundry.com  
[www.reliance-foundry.com](http://www.reliance-foundry.com)

TITLE

Bollard Post, Model R-7901

SIZE

C

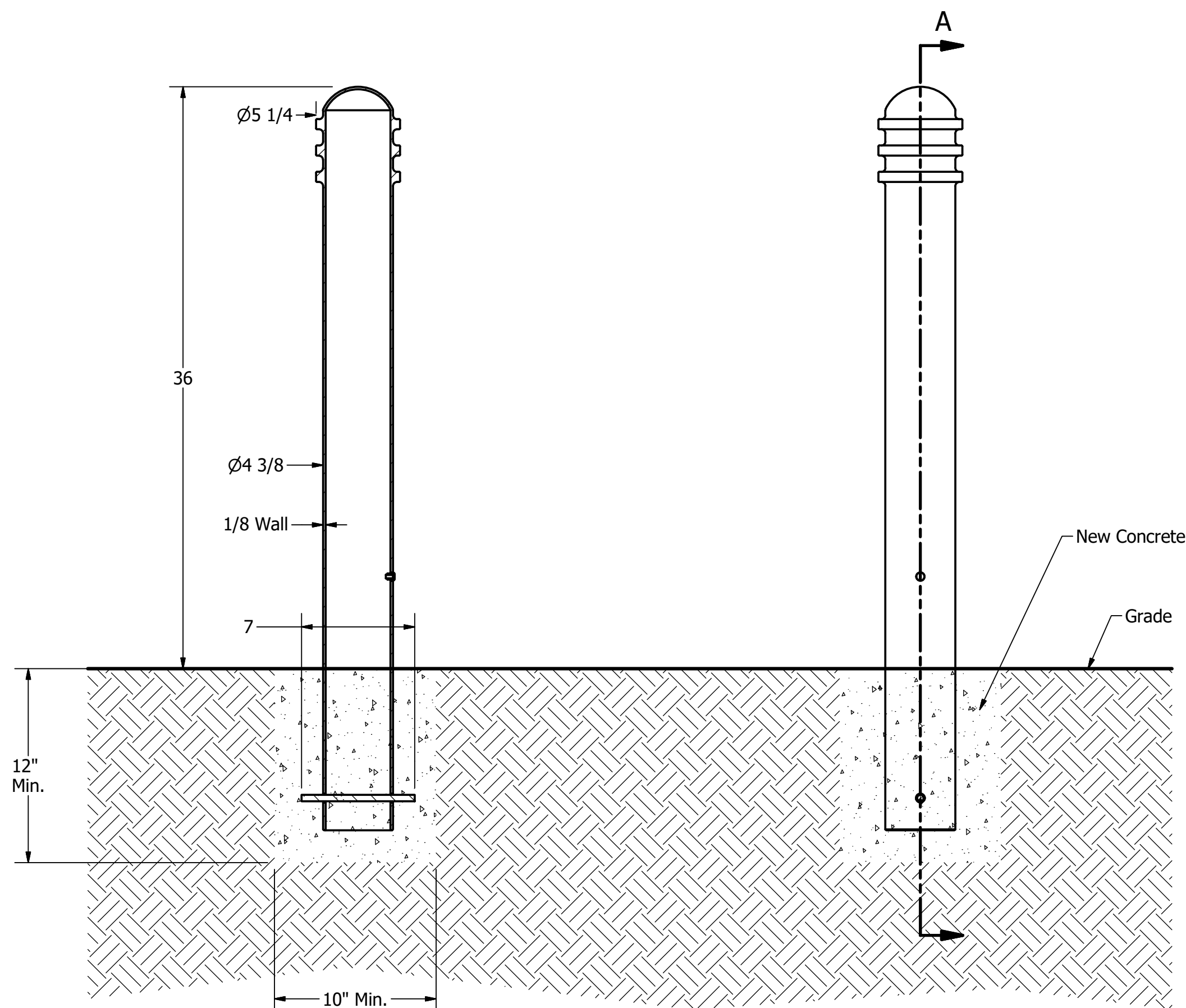
DWG NO

R-7901

REV

C1

Bollard Post, Model R-7901



SECTION A-A

A

Fixed Installation in New Concrete

Notes:

- Embedment details are for reference illustration only. Minimum foundation sizes depend on local soil conditions, weather conditions, and engineering requirements.
- Bollard post is provided as shown, with material detailed in legend below. Concrete, foundation and/or installation ordered separately or provided by others.
- This drawing is not drawn to scale. Dimensions provided herein is for reference only. Please consult Reliance Foundry sales professionals if any dimension is critical to your particular installation.
- Reliance Foundry reserves the right to amend design and specifications without prior notice for product improvement.

| PARTS LIST |     |                        |                          |                      |         |
|------------|-----|------------------------|--------------------------|----------------------|---------|
| ITEM       | QTY | PART NUMBER            | DESCRIPTION              | MATERIAL             | WEIGHT  |
| 1          | 1   | R7901 Fixed Bollard    | R7901 Fixed Bollard Body | Steel Powder Coated  | 33 lbs  |
| 2          | 1   | Polyethylene Plug 1/2" | Polyethylene Plug 1/2"   | Polyethylene Plastic |         |
| 3          | 1   | Steel Rebar            | Steel Rebar 10 mm x 7"   | Steel Epoxy Coated   | 3/8 lbs |

General Description:

Clearly communicate intended routes and access regulations on your streetscape with the model R-7901 steel bollard from Reliance Foundry. Composed of standard steel and finished with a durable powder-coating, it is an aesthetically versatile device that will complement the architecture of almost any site. The R-7901 can be installed with a standard fixed mounting or with a removable or fold down mountings that allow temporary access to maintenance, delivery or emergency vehicles. Seven powder coating color options are available and the model R-7901 is kept in stock, available for immediate shipment.

For more information on bollard post installation, please visit: [www.reliance-foundry.com/bollard/installation-bollards](http://www.reliance-foundry.com/bollard/installation-bollards)

Specifications:

Height: 36" ( Above Grade )

Base Diameter: 4 3/8"

Weight: 33 lbs ( Bollard Post Full Length )

Material: Steel ( ASTM A36 )

Finish Options:

- ✓ Polyester Powdercoated
- See Reliance Foundry's standard color options at [www.reliance-foundry.com/bollard/colors-bollards](http://www.reliance-foundry.com/bollard/colors-bollards)

Mount Options:

- Removable Receiver with Lid (see sheet 2 of 7)
- Removable Receiver with Chain (see sheet 3 of 7)
- ✓ Fixed Embedded Mount (see sheet 4 of 7)
- Flanged Surface Mount (see sheet 5 of 7)
- Fold Down Mount (see sheet 6 of 7)
- Optional Chain Accessory (see sheet 7 of 7)

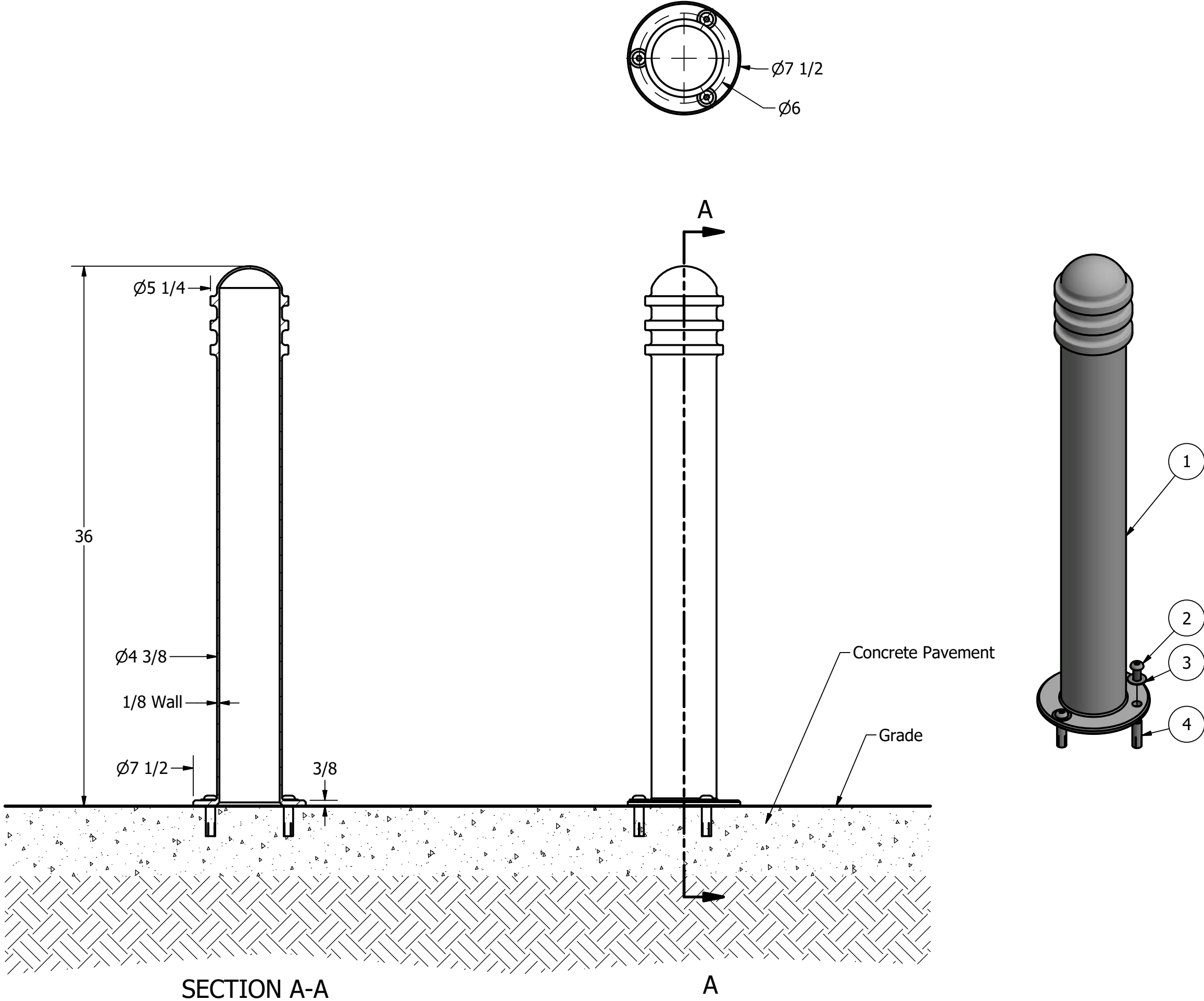
RELIANCE FOUNDRY  
SINCE 1925

Unit 207, 6450 - 148 Street, Surrey, BC V3S 7G7, Canada  
1-888-735-5680 info@reliance-foundry.com  
[www.reliance-foundry.com](http://www.reliance-foundry.com)

TITLE  
**Bollard Post, Model R-7901**

SIZE C DWG NO R-7901 REV C1

Bollard Post, Model R-7901



General Description:

Clearly communicate intended routes and access regulations on your streetscape with the model R-7901 steel bollard from Reliance Foundry. Composed of standard steel and finished with a durable powder-coating, it is an aesthetically versatile device that will complement the architecture of almost any site. The R-7901 can be installed with a standard fixed mounting or with a removable or fold down mountings that allow temporary access to maintenance, delivery or emergency vehicles. Seven powder coating color options are available and the model R-7901 is kept in stock, available for immediate shipment.

For more information on bollard post installation, please visit: [www.reliance-foundry.com/bollard/installation-bollards](http://www.reliance-foundry.com/bollard/installation-bollards)

Specifications:

Height: 36" ( Above Grade )

Base Diameter: 4 3/8"

Weight: 33 lbs ( Bollard Post Full Length )

Material: Steel ( ASTM A36 )

Finish Options:

- ✓ Polyester Powdercoated
- See Reliance Foundry's standard color options at [www.reliance-foundry.com/bollard/colors-bollards](http://www.reliance-foundry.com/bollard/colors-bollards)

Mount Options:

- Removable Receiver with Lid (see sheet 2 of 7)
- Removable Receiver with Chain (see sheet 3 of 7)
- Fixed Embedded Mount (see sheet 4 of 7)
- ✓ Flanged Surface Mount (see sheet 5 of 7)
- Fold Down Mount (see sheet 6 of 7)
- Optional Chain Accessory (see sheet 7 of 7)

Flanged / Surface Mount

Notes:

- Embedment details are for reference illustration only. Minimum foundation sizes depend on local soil conditions, weather conditions, and engineering requirements.
- Bollard post is provided as shown, with material detailed in legend below. Concrete, foundation and/or installation ordered separately or provided by others.
- This drawing is not drawn to scale. Dimensions provided herein is for reference only. Please consult Reliance Foundry sales professionals if any dimension is critical to your particular installation.
- Reliance Foundry reserves the right to amend design and specifications without prior notice for product improvement.

| PARTS LIST |     |                                |                                                                            |                     |         |
|------------|-----|--------------------------------|----------------------------------------------------------------------------|---------------------|---------|
| ITEM       | QTY | PART NUMBER                    | DESCRIPTION                                                                | MATERIAL            | WEIGHT  |
| 1          | 1   | R7901 Flanged Bollard          | R7901 Flanged Bollard Body                                                 | Steel Powder Coated | 32 lbs  |
| 2          | 3   | Button Head Bolt 1/2" x 1 1/4" | Hexagon Socket Button Head Cap Bolt 1/2" x 1 1/4" - requires 5/16" hex key | Stainless Steel     | 1/8 lbs |
| 3          | 3   | Stainless Steel Washer 1/2"    | Stainless Steel Washer 1/2" OD 1 1/4" Thick .05"                           | Stainless Steel     |         |
| 4          | 3   | Drop-in Concrete Insert 1/2"   | Drop-in Concrete Insert 1/2" - requires 5/8" x 2" hole (dia. x depth)      | Steel Plated        | 1/8 lbs |

RELIANCE FOUNDRY  
SINCE 1925

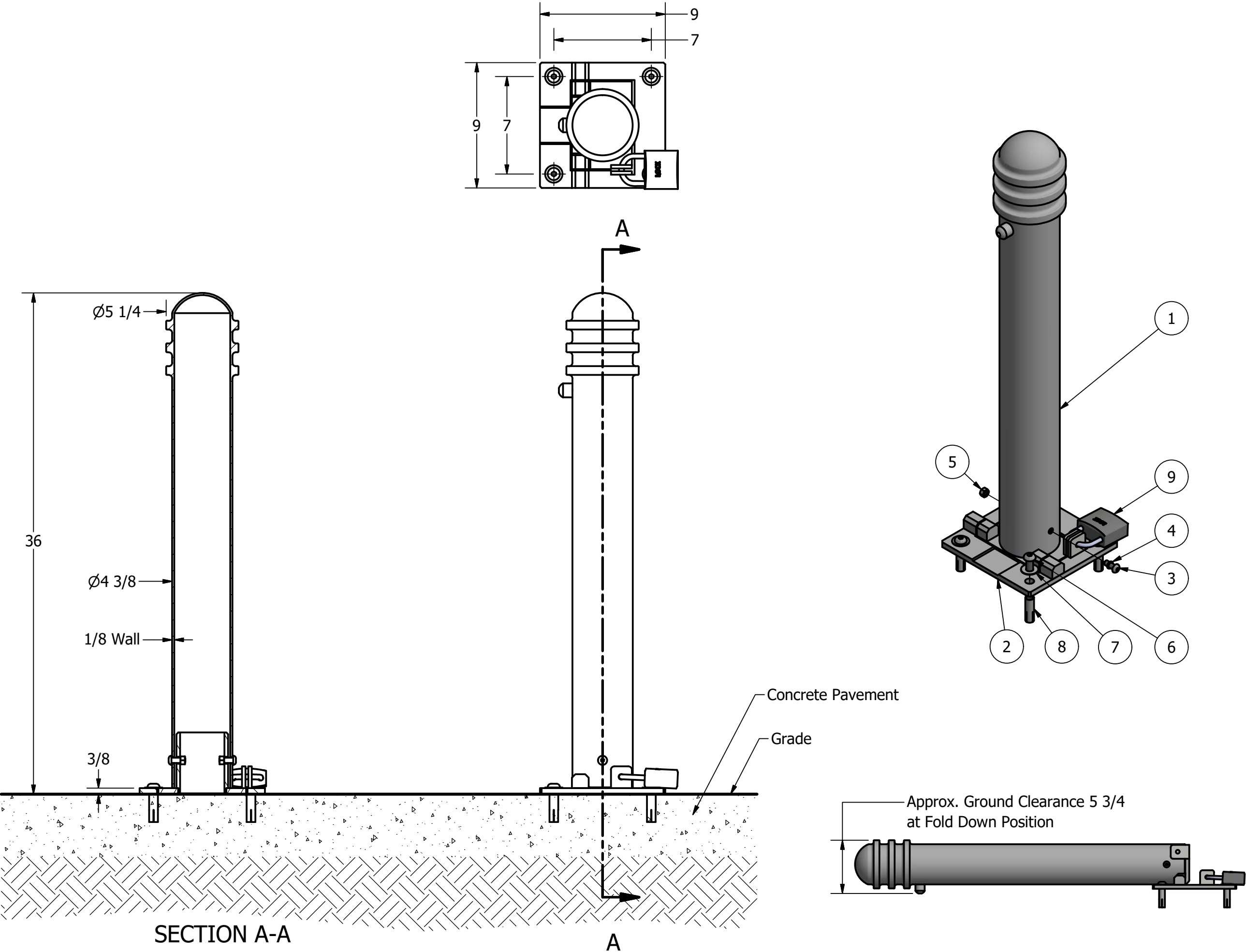
Unit 207, 6450 - 148 Street, Surrey, BC V3S 7G7, Canada  
1-888-735-5680 info@reliance-foundry.com  
[www.reliance-foundry.com](http://www.reliance-foundry.com)

Bollard Post, Model R-7901

| SIZE | DWG NO | REV |
|------|--------|-----|
| C    | R-7901 | C1  |



Bollard Post, Model R-7901



General Description:

Clearly communicate intended routes and access regulations on your streetscape with the model R-7901 steel bollard from Reliance Foundry. Composed of standard steel and finished with a durable powder-coating, it is an aesthetically versatile device that will complement the architecture of almost any site. The R-7901 can be installed with a standard fixed mounting or with a removable or fold down mountings that allow temporary access to maintenance, delivery or emergency vehicles. Seven powder coating color options are available and the model R-7901 is kept in stock, available for immediate shipment.

For more information on bollard post installation, please visit: [www.reliance-foundry.com/bollard/installation-bollards](http://www.reliance-foundry.com/bollard/installation-bollards)

Specifications:

Height: 36" ( Above Grade )

Base Diameter: 4 3/8"

Weight: 33 lbs ( Bollard Post Full Length )

Material: Steel ( ASTM A36 )

Finish Options:

- ✓ Polyester Powdercoated
- See Reliance Foundry's standard color options at [www.reliance-foundry.com/bollard/colors-bollards](http://www.reliance-foundry.com/bollard/colors-bollards)

Mount Options:

- Removable Receiver with Lid (see sheet 2 of 7)
- Removable Receiver with Chain (see sheet 3 of 7)
- Fixed Embedded Mount (see sheet 4 of 7)
- Flanged Surface Mount (see sheet 5 of 7)
- ✓ Fold Down Mount (see sheet 6 of 7)
- Optional Chain Accessory (see sheet 7 of 7)

Notes:

- Embedment details are for reference illustration only. Minimum foundation sizes depend on local soil conditions, weather conditions, and engineering requirements.
- Bollard post is provided as shown, with material detailed in legend below. Concrete, foundation and/or installation ordered separately or provided by others.
- This drawing is not drawn to scale. Dimensions provided herein is for reference only. Please consult Reliance Foundry sales professionals if any dimension is critical to your particular installation.
- Reliance Foundry reserves the right to amend design and specifications without prior notice for product improvement.

| PARTS LIST |     |                                |                                                                            |                                    |         |
|------------|-----|--------------------------------|----------------------------------------------------------------------------|------------------------------------|---------|
| ITEM       | QTY | PART NUMBER                    | DESCRIPTION                                                                | MATERIAL                           | WEIGHT  |
| 1          | 1   | R7901 Fold Down Bollard        | R7901 Fold Down Bollard Assembly                                           | Steel Powder Coated                | 29 lbs  |
| 2          | 1   | R7950A Fold Down Base          | R7950A Fold Down Base Assembly                                             | Steel HDG                          | 15 lbs  |
| 3          | 2   | Button Head Bolt 3/8" x 1"     | Hexagon Socket Button Head Cap Bolt 3/8" x 1" - requires 7/32" hex key     | Stainless Steel                    |         |
| 4          | 2   | O-Ring 3/8"                    | Nitrile Rubber O-Ring 3/8"                                                 | Nitrile Rubber                     |         |
| 5          | 2   | Hex Nut Nylon Lock 3/8"        | Hex Nut Nylon Lock 3/8" - requires 9/16" wrench                            | Steel Plated Nylon Lock            |         |
| 6          | 4   | Button Head Bolt 1/2" x 1 1/4" | Hexagon Socket Button Head Cap Bolt 1/2" x 1 1/4" - requires 5/16" hex key | Stainless Steel                    | 1/8 lbs |
| 7          | 4   | Stainless Steel Washer 1/2"    | Stainless Steel Washer 1/2" OD 1 1/4" Thick .05"                           | Stainless Steel                    |         |
| 8          | 4   | Drop-in Concrete Insert 1/2"   | Drop-in Concrete Insert 1/2" - requires 5/8" x 2" hole (dia. x depth)      | Steel Plated                       | 1/8 lbs |
| 9          | 1   | Padlock (Optional)             | Optional Padlock (Brass or Stainless Steel)                                | Choice of Brass or Stainless Steel | 5/8 lbs |

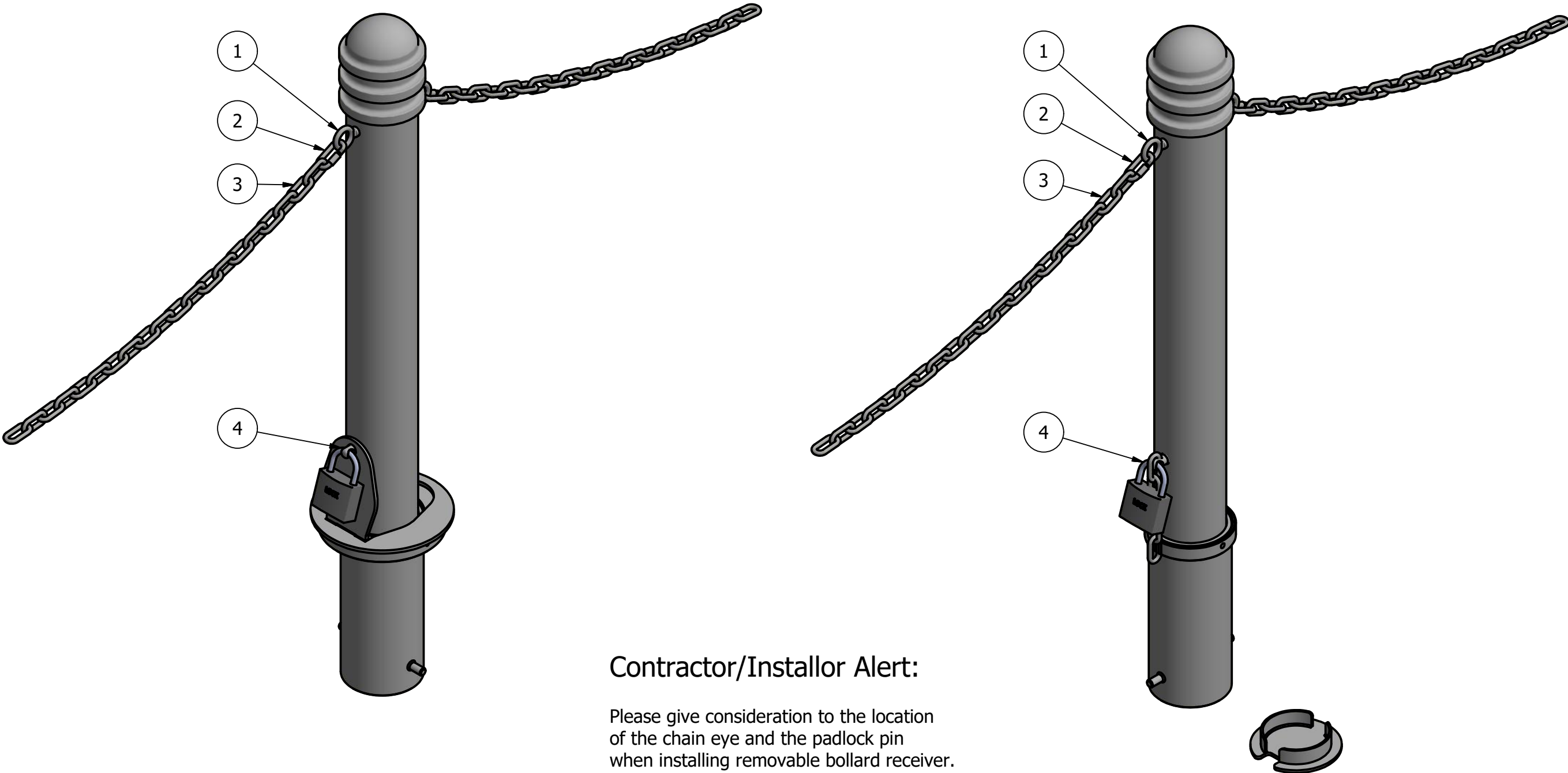
RELIANCE FOUNDRY  
SINCE 1925

Unit 207, 6450 - 148 Street, Surrey, BC V3S 7G7, Canada  
1-888-735-5680 info@reliance-foundry.com  
[www.reliance-foundry.com](http://www.reliance-foundry.com)

Bollard Post, Model R-7901

| SIZE | DWG NO | REV |
|------|--------|-----|
| C    | R-7901 | C1  |

Bollard Post, Model R-7901



Contractor/Installor Alert:

Please give consideration to the location of the chain eye and the padlock pin when installing removable bollard receiver. It is important that the removable bollard receiver padlock pin is oriented in the same direction as the chain is intended to flow.

General Description:

Clearly communicate intended routes and access regulations on your streetscape with the model R-7901 steel bollard from Reliance Foundry. Composed of standard steel and finished with a durable powder-coating, it is an aesthetically versatile device that will complement the architecture of almost any site. The R-7901 can be installed with a standard fixed mounting or with a removable or fold down mountings that allow temporary access to maintenance, delivery or emergency vehicles. Seven powder coating color options are available and the model R-7901 is kept in stock, available for immediate shipment.

For more information on bollard post installation, please visit: [www.reliance-foundry.com/bollard/installation-bollards](http://www.reliance-foundry.com/bollard/installation-bollards)

Specifications:

Height: 36" ( Above Grade )

Base Diameter: 4 3/8"

Weight: 33 lbs ( Bollard Post Full Length )

Material: Steel ( ASTM A36 )

Finish Options:

- ✓ Polyester Powdercoated
- See Reliance Foundry's standard color options at [www.reliance-foundry.com/bollard/colors-bollards](http://www.reliance-foundry.com/bollard/colors-bollards)

Mount Options:

- Removable Receiver with Lid (see sheet 2 of 7)
- Removable Receiver with Chain (see sheet 3 of 7)
- Fixed Embedded Mount (see sheet 4 of 7)
- Flanged Surface Mount (see sheet 5 of 7)
- Fold Down Mount (see sheet 6 of 7)
- ✓ Optional Chain Accessory (see sheet 7 of 7)

Optional Chain Accessories Installation Details

| PARTS LIST |                                 |                                             |                                    |
|------------|---------------------------------|---------------------------------------------|------------------------------------|
| ITEM       | PART NUMBER                     | DESCRIPTION                                 | MATERIAL                           |
| 1          | Chain Eye 3/8" (Optional)       | Optional Chain Eye 3/8"                     | Steel Powder Coated                |
| 2          | Quick Link Connector (Optional) | Optional Quick Link Connector               | Steel Powder Coated                |
| 3          | Chain 5/16" (Optional)          | Optional Chain 5/16" (Sold by Length)       | Steel Powder Coated                |
| 4          | Padlock (Optional)              | Optional Padlock (Brass or Stainless Steel) | Choice of Brass or Stainless Steel |



Unit 207, 6450 - 148 Street, Surrey, BC V3S 7G7, Canada  
1-888-735-5680 info@reliance-foundry.com  
[www.reliance-foundry.com](http://www.reliance-foundry.com)

| TITLE                      |        |              |  |
|----------------------------|--------|--------------|--|
| Bollard Post, Model R-7901 |        |              |  |
| SIZE                       | DWG NO | REV          |  |
| C                          | R-7901 | C1           |  |
| NOT TO SCALE               |        | SHEET 7 OF 7 |  |