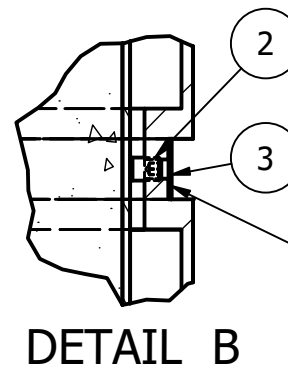
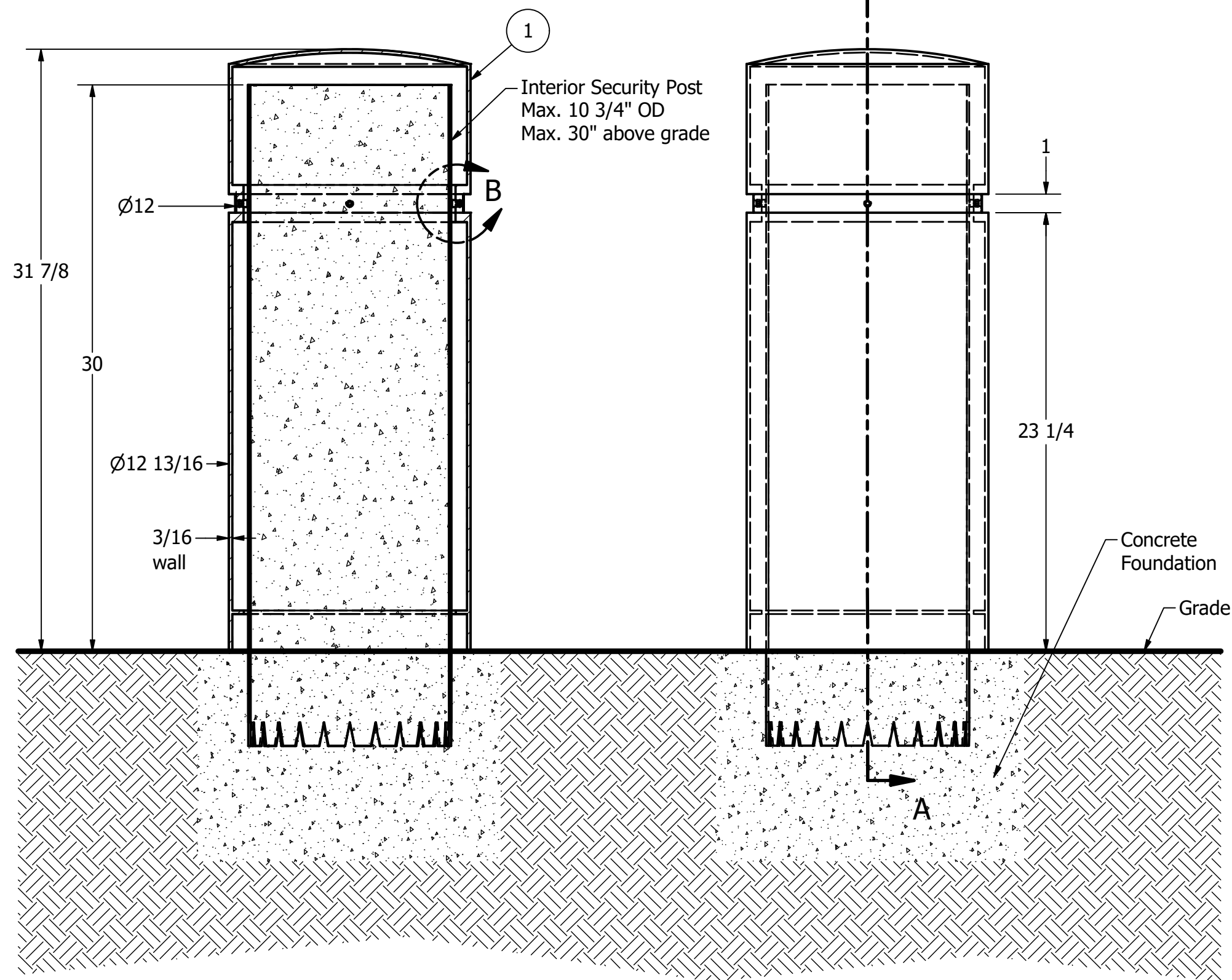


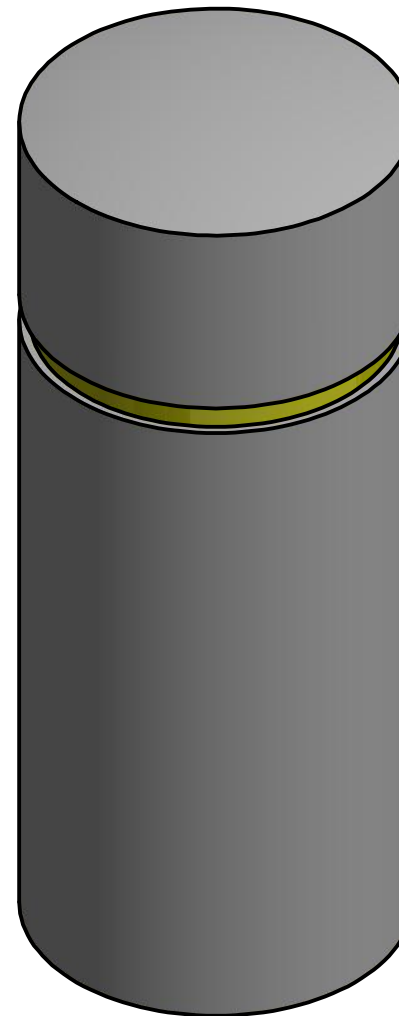
Bollard Cover R-7341



Install set screws first, then cover with self-adhesive reflective tape



SECTION A-A



General Description:

The R-7341 stainless steel bollard cover combines style and functionality for a versatile product. Corrosion-resistant 316 stainless steel covers offer protection for security posts up to 10-3/4 inches wide and 30 inches tall. Slip over steel pipes to protect them from wear and corrosion while enhancing their aesthetic to fit in with contemporary infrastructure. Install using set screws. Optional powder coating is offered in 1 of 6 standard colors.

Specifications:

Height: 31 7/8"
 Base Diameter: 12 13/16"
 Weight: 85 lbs (Bollard Only)
 Material: Stainless Steel 316
 Max. Interior Security Post Size:
 10 3/4" x 30" (Diameter x Height)

Finish Options:

- Satin #6 Buffed
- Polyester Powdercoated (Additional service charge)

Reflective Tape Options:

- None
- Yellow
- White
- Red
- Blue

See Reliance Foundry's standard color options at:
www.reliance-foundry.com/bollard/colors-bollards

Care and Maintenance:

Despite its natural anti-corrosion properties, stainless steel may corrode if cautionary procedures are not followed, or if products are neglected for extended periods of time. High-saline environments or other areas with high exposure to chlorides may increase risk of stainless steel corrosion. Regular cleaning will maintain optimal condition and appearance.

See Reliance Foundry's maintenance guide at:
www.reliance-foundry.com/bollard/stainless-steel-maintenance

Notes:

- 1) Bollard cover is provided as shown. Concrete, foundation and/or installation ordered separately or provided by others.
- 2) Minimum foundation sizes depend on local soil conditions, weather conditions, and engineering requirements.
- 3) Dimensions provided herein is for reference only. Please consult Reliance Foundry sales professionals if any dimension is critical to your particular installation.
- 4) Reliance Foundry reserves the right to amend design and specifications without prior notice for product improvement.

PARTS LIST

ITEM	QTY	PART NUMBER	DESCRIPTION	MATERIAL	WEIGHT
1	1	R7341	R7341 Stainless Bollard Cover	Stainless Steel 316	85 lbs
2	4	Hexagon Socket Set Screw 3/8" x 1/2"	Hexagon Socket Set Screw 3/8" x 1/2" - requires 3/16" hex key	Stainless Steel	
3	1	Reflective Tape (Optional)	Optional Reflective Tape, Max. 1" Width	Plastic	

RELIANCE FOUNDRY
 SINCE 1925

Unit 207, 6450 - 148 Street, Surrey, BC V3S 7G7, Canada
 1-877-789-3245 info@reliance-foundry.com
www.reliance-foundry.com

TITLE

Bollard Cover R-7341

SIZE
C

DWG NO
R7341

REV
C