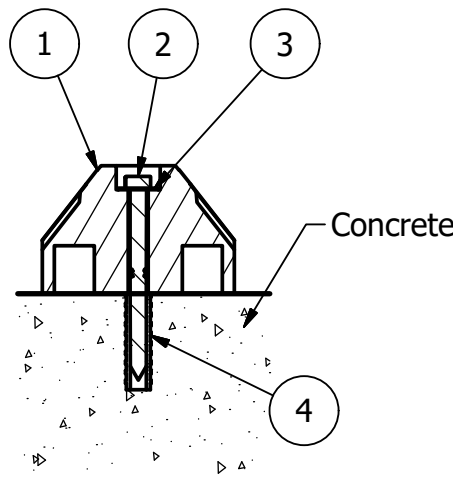
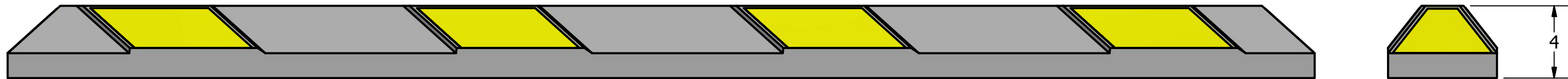
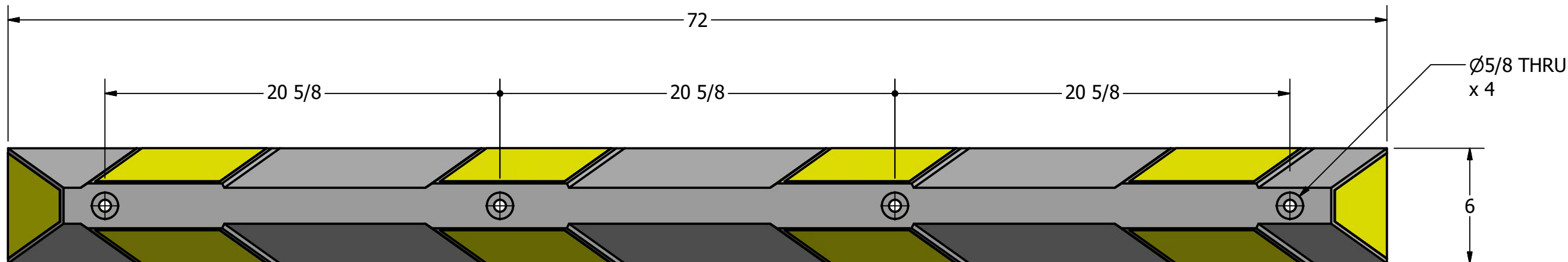
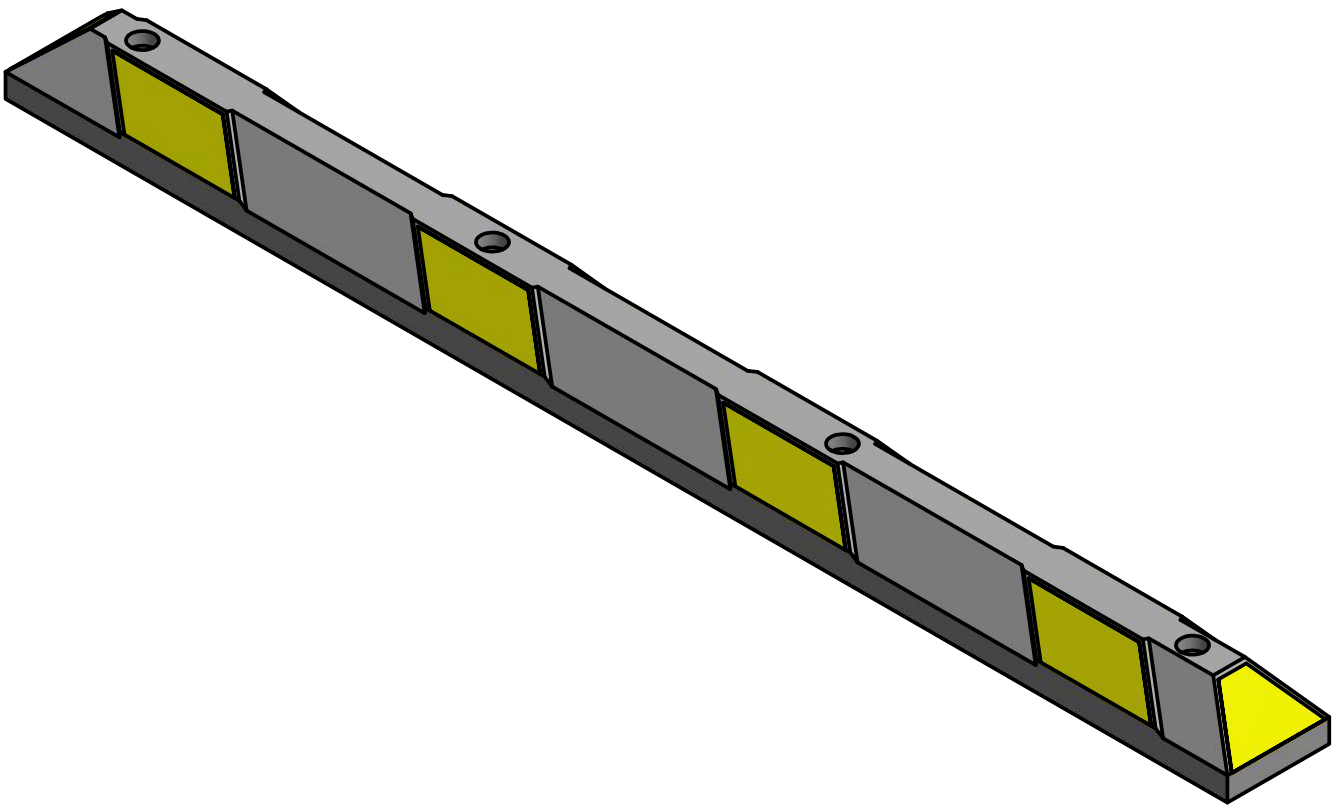


Parking Stop, Model R-2006 Series



Concrete Installation
w/ Lag Bolt and Lag Shield



General Description:

Parking stops indicate how far drivers should pull into a parking stall. They protect vehicles from scraping low bumpers and tailpipes on high curbs. They also prevent intrusion into sidewalks and other pedestrian areas--as well as gardens, utility spaces, exposed walls, windows and other sensitive areas. When installed in parking spaces, curbs prevent vehicles from driving through stalls--helping to ensure loading room for back-in vehicles and minimizing risk of collision between vehicles simultaneously parking opposite each other. Limiting vehicle pull-through ensure more predictable driving greater safety.

Specifications:

- Length: 72"
- Width: 6"
- Height: 4"
- Weight: 34 lbs
- Material: Recycled Rubber Composite

Color Selections:

- ☒ Yellow Stripe on Black: R-2006-YEL-BLK
- ☐ White Stripe on Black: R-2006-WHT-BLK
- ☐ White Stripe on Blue: R-2006-WHT-BLU

Installation Options:

- ☒ Concrete Installation w/ Lag Bolt
(see sheet 1 of 2)
- ☐ Asphalt Installation w/ Rebar Spike
(see sheet 2 of 2)

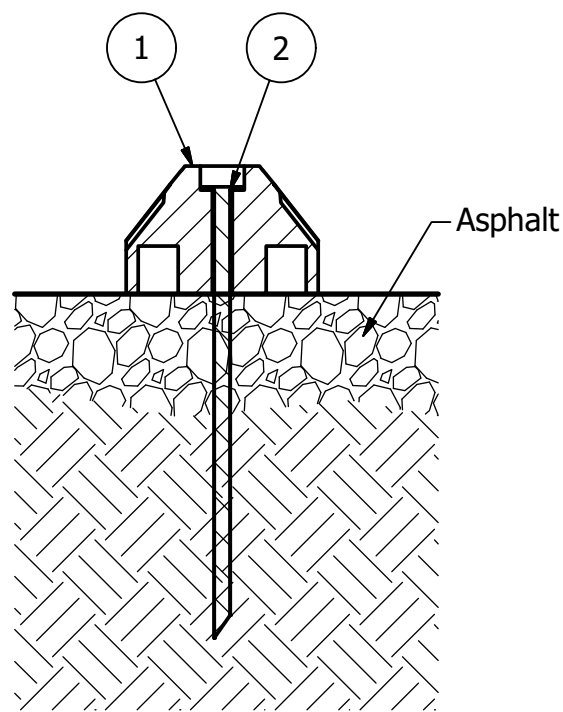
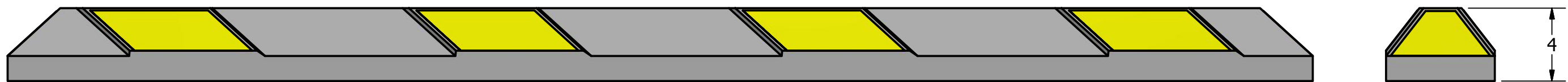
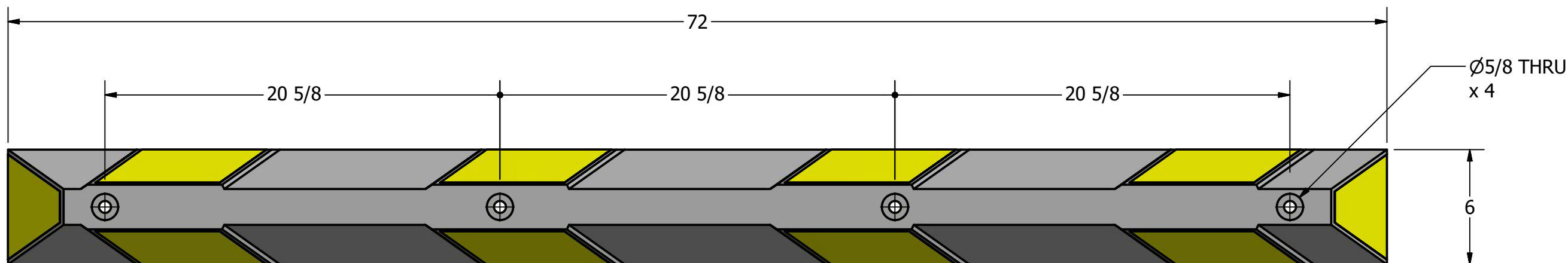
RELIANCE FOUNDRY
SINCE 1925

Unit 207, 6450 - 148 Street, Surrey, BC V3S 7G7, Canada
1-888-735-5680 info@reliance-foundry.com
www.reliance-foundry.com

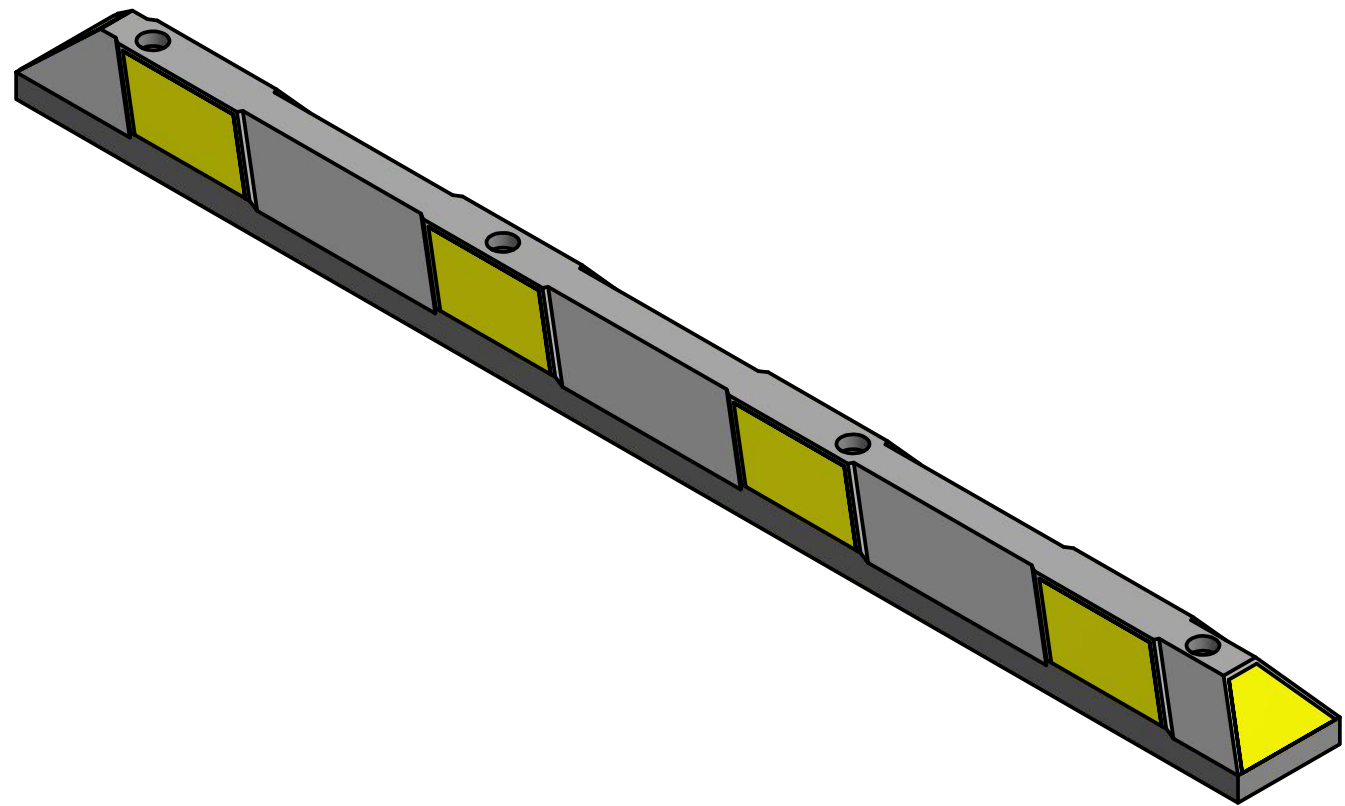
PARTS LIST					
ITEM	QTY	PART NUMBER	DESCRIPTION	MATERIAL	WEIGHT
1	1	R2006	R2006 6' Rubber Parking Stop	Compression Molded Recycled Rubber Composite	34 lbs
2	4	Hex Lag Bolt 1/2" x 6"	Hex Lag Bolt 1/2" x 6" - requires 3/4" wrench (socket)	Steel HDG	1/4 lbs
3	4	Washer 1/2"	Washer 1/2" OD 1 1/4" Thick .05"	Steel Plated	
4	4	Lag Bolt Shield 1/2" x 3"	Lag Bolt Shield 1/2" x 3" - requires 3/4" x 3" hole (dia. x depth)	Steel HDG	1/8 lbs

TITLE			
Parking Stop R-2006 Series			
SIZE		DWG NO	REV
C		R2006	C1
NOT TO SCALE		SHEET 1 OF 2	

Parking Stop, Model R-2006 Series



Asphalt Installation
w/ Rebar Spike



General Description:

Parking stops indicate how far drivers should pull into a parking stall. They protect vehicles from scraping low bumpers and tailpipes on high curbs. They also prevent intrusion into sidewalks and other pedestrian areas--as well as gardens, utility spaces, exposed walls, windows and other sensitive areas. When installed in parking spaces, curbs prevent vehicles from driving through stalls--helping to ensure loading room for back-in vehicles and minimizing risk of collision between vehicles simultaneously parking opposite each other. Limiting vehicle pull-through ensure more predictable driving greater safety.

Specifications:

- Length: 72"
- Width: 6"
- Height: 4"
- Weight: 34 lbs
- Material: Recycled Rubber Composite

Color Selections:

- ☒ Yellow Stripe on Black: R-2006-YEL-BLK
- ☐ White Stripe on Black: R-2006-WHT-BLK
- ☐ White Stripe on Blue: R-2006-WHT-BLU

Installation Options:

- ☐ Concrete Installation w/ Lag Bolt
(see sheet 1 of 2)
- ☒ Asphalt Installation w/ Rebar Spike
(see sheet 2 of 2)

RELIANCE FOUNDRY
SINCE 1925

Unit 207, 6450 - 148 Street, Surrey, BC V3S 7G7, Canada
1-888-735-5680 info@reliance-foundry.com
www.reliance-foundry.com

TITLE
Parking Stop R-2006 Series

PARTS LIST					
ITEM	QTY	PART NUMBER	DESCRIPTION	MATERIAL	WEIGHT
1	1	R2006	R2006 6' Rubber Parking Stop	Compression Molded Recycled Rubber Composite	34 lbs
2	4	Rebar Spike 1/2" - 14"	Rebar Spike 1/2" - 14"	Steel HDG	3/4 lbs

SIZE C	DWG NO R2006	REV C1
------------------	------------------------	------------------