

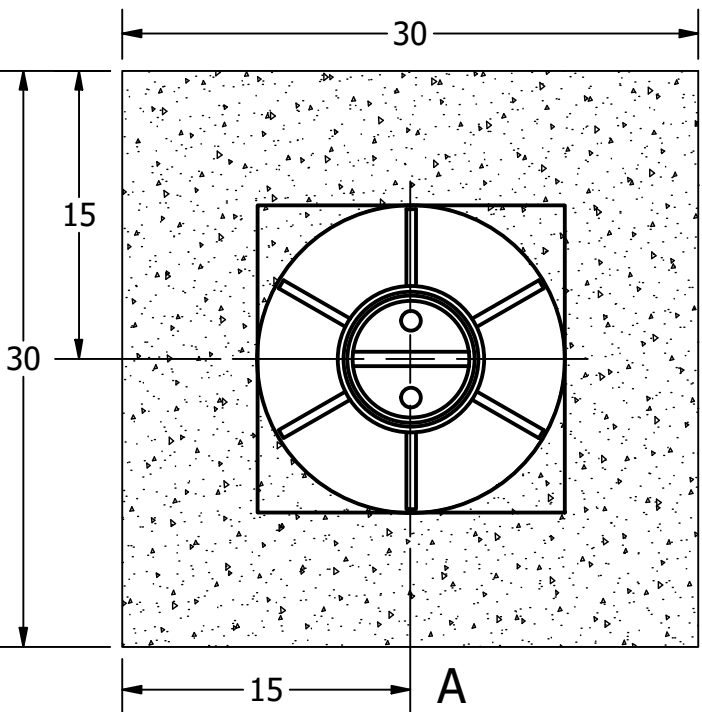
Bollard, Model R-1009-40-R

D

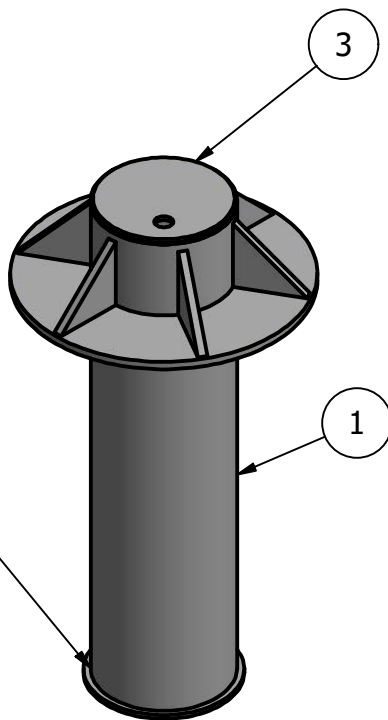
C

B

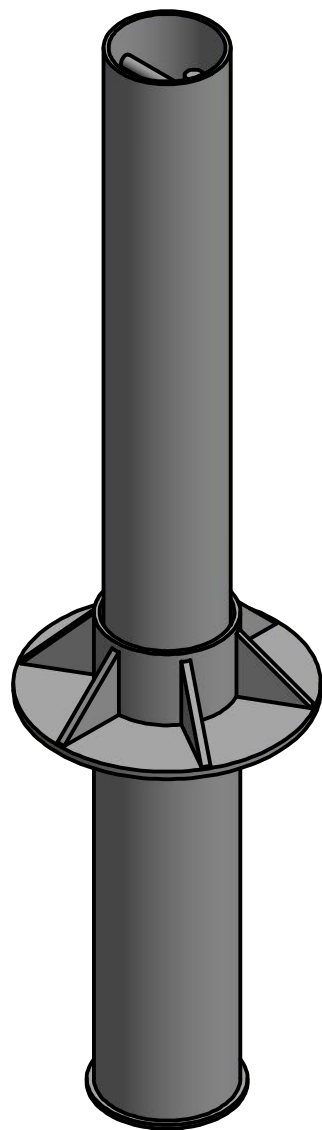
A



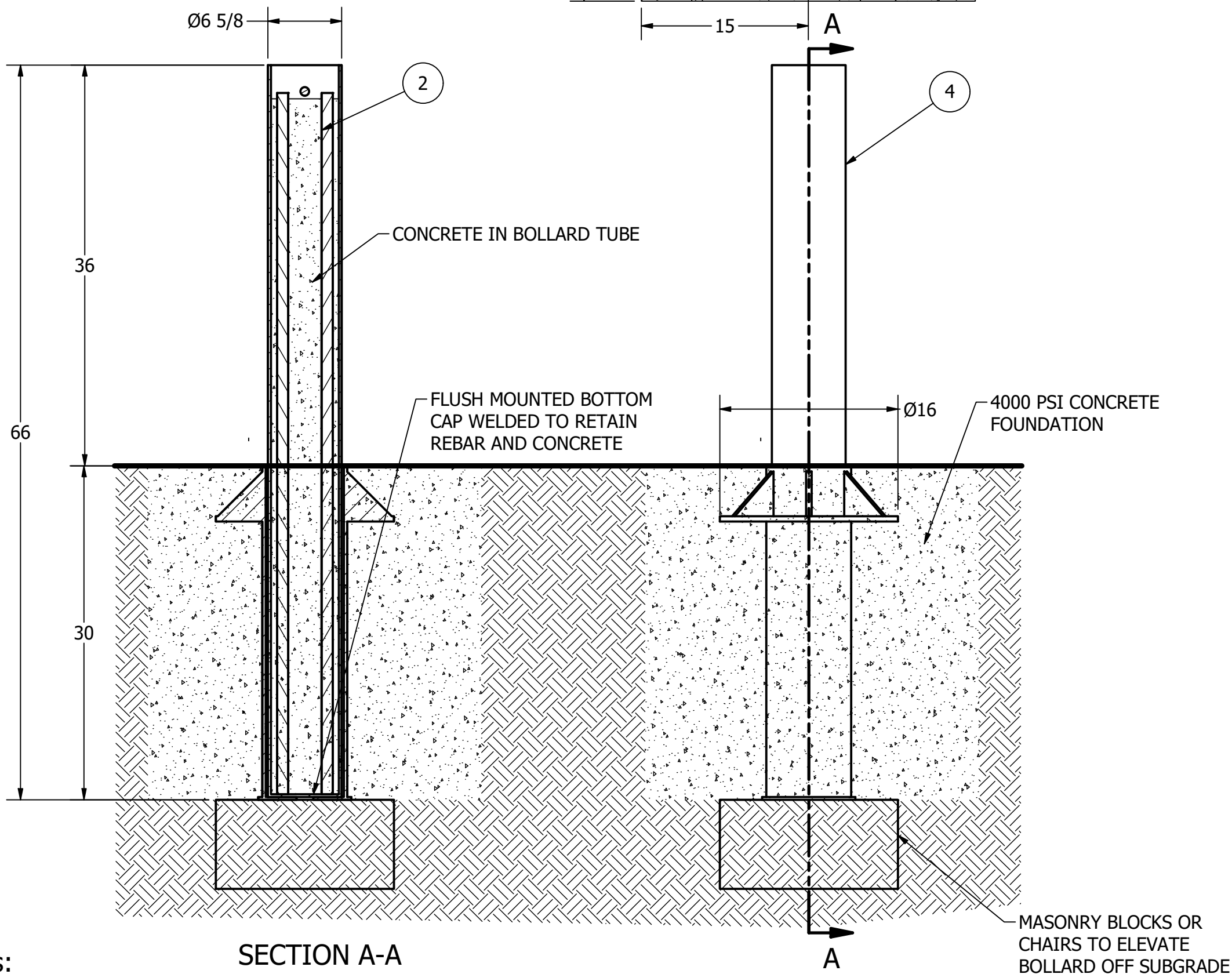
BOTTOM SLEEVE CAP
WELDED WITH HOLE
FOR DRAINAGE



BOLLARD SLEEVE WITH CAP



BOLLARD SLEEVE WITH
REMOVABLE BOLLARD



Notes:

SECTION A-A

- Embedment details are for reference illustration only. Minimum foundation sizes depend on local soil conditions, weather conditions, and engineering requirements.
- Bollard is provided as shown, with parts listed below. Concrete foundation and/or installation not provided by Reliance Foundry.
- This drawing is not drawn to scale. Dimensions provided herein is for reference only. Please consult Reliance Foundry sales professionals if any dimension is critical to your particular installation.
- Reliance Foundry reserves the right to amend design and specifications without prior notice for product improvement.

PARTS LIST			
ITEM	QTY	PART NUMBER	DESCRIPTION
1	1	R-1009-40-R Removable Sleeve	R-1009-40-R Removable Sleeve
2	2	REBAR 62	REBAR 1IN OD, 62IN LENGTH
3	1	R-1009-40-R Cap	R-1009-40-R Cap
4	1	R-1009-40-R Removable Bollard	R-1009-40-R Removable Bollard

General Description:

R-1009-40-R ASTM C40 removable crash-rated bollards can be depended upon for exceptional stopping power and impact resistance. The R-1009-40-R is independently tested against ASTM C40 P1 with the ability to withstand a vehicle up to 5000 pounds traveling at 30 mph. No assembly or specialty subgrade is required, making for a very easy-to-install crash-rated bollard. To install, simply set the pre-assembled bollard into the site and pour concrete. Removing the crash-rated bollard is straightforward: Insert a lifting handle through the top of the bollard, and lift the bollard out of the bollard sleeve using a forklift or other equipment. To increase aesthetics, place bollard covers over crash-rated bollards.

For more information on bollard post installation, please visit:
www.reliance-foundry.com/bollard/installation-bollards

Specifications:

Height: 66"
Body Diameter: 16"
Weight: 126 lbs
Material: Steel

RELIANCE FOUNDRY
— SINCE 1925 —

Unit 207, 6450 - 148 Street, Surrey, BC V3S 7G7, Canada
1-877-789-3245 info@reliance-foundry.com
www.reliance-foundry.com

TITLE

Bollard R-1009-40-R

SIZE

C

DWG NO

R-1009-40-R_public

REV

A