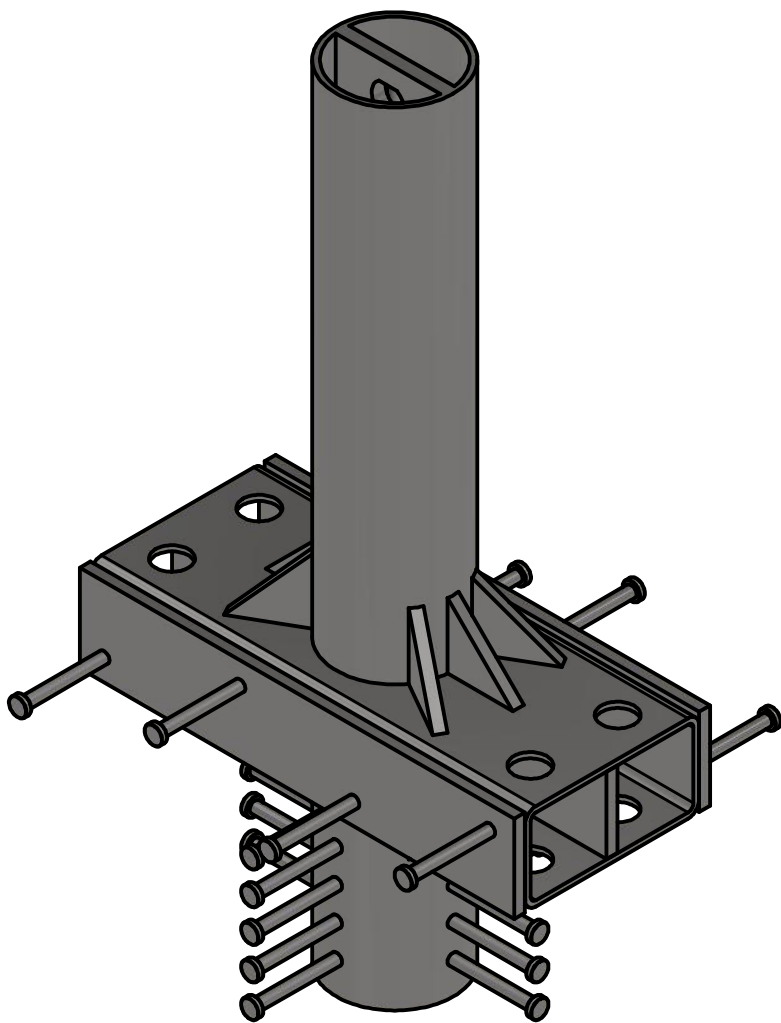
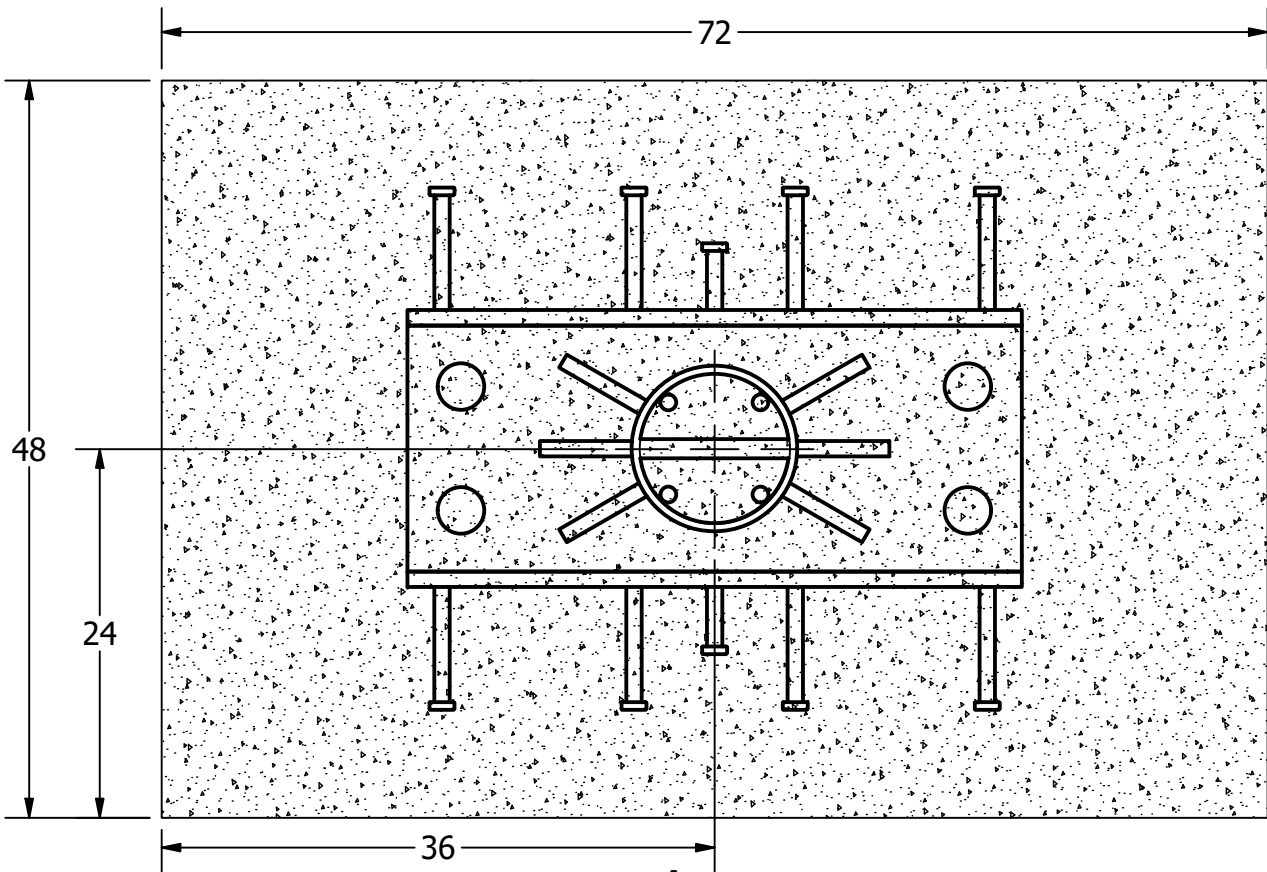


Bollard, Model R-1009-12



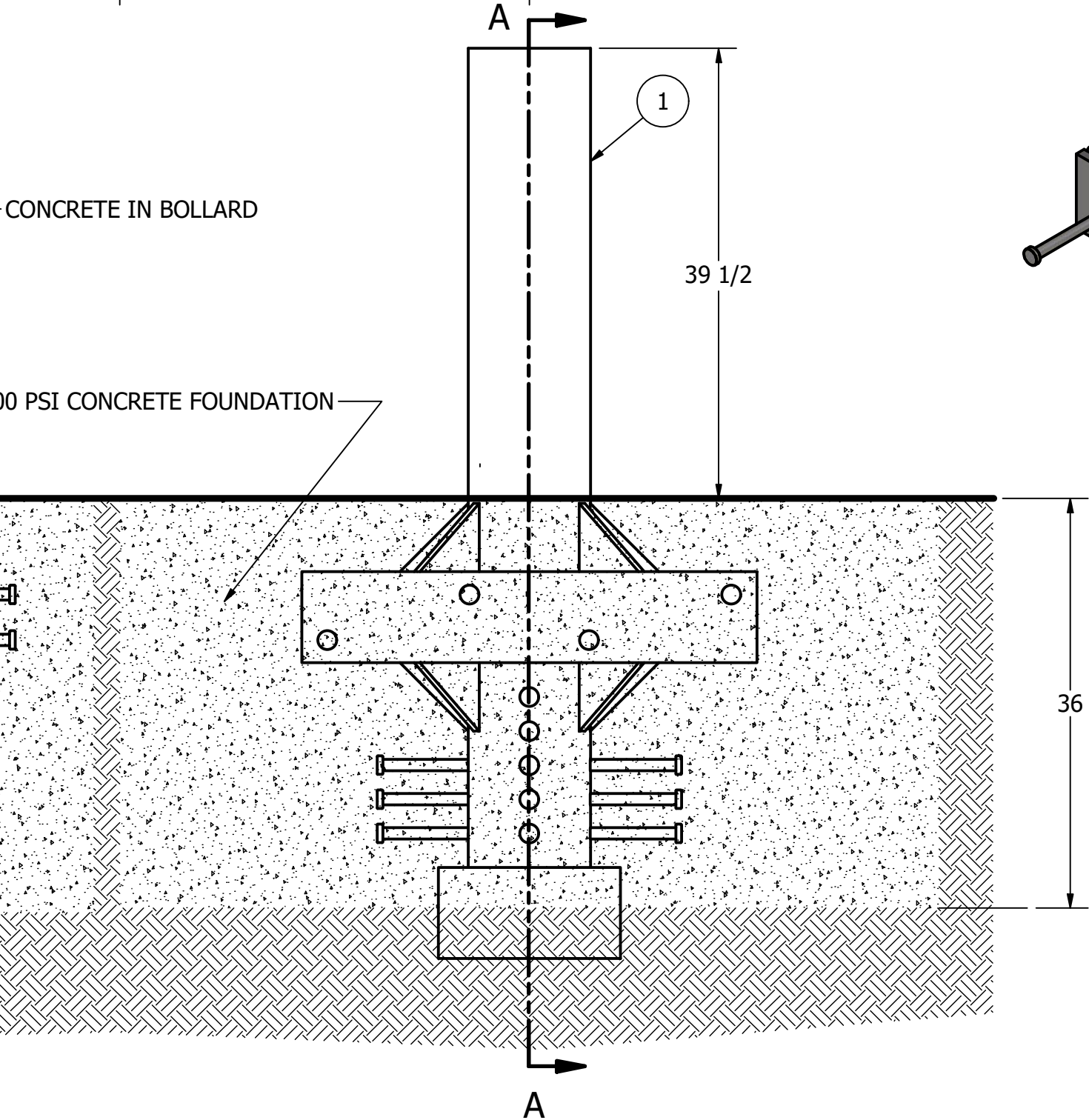
General Description:

R-1009-12 ASTM M50 crash-rated bollards create safer public spaces by protecting pedestrians and storefronts from vehicle intrusion. Two or more of these security bollards together are certified to ASTM M50 P1, engineered to stop a 15,000-pound vehicle travelling at 50 mph with 3.3 feet penetration. A single bollard will stop the same vehicle in 3.9 feet (P2 rated). Straight-forward installation means no bolting, tying, or assembly required. Prefabricated bollards can be set into the excavation easily; no specialty subgrade required. Select from a variety of bollard covers to enhance aesthetics. Removable options available.

For more information on bollard post installation, please visit: [www.reliance-foundry.com/bollard/installation-bollards](http://www.reliance-foundry.com/bollard/installation-bollards)

Specifications:

- Height: 72"
- Body Size: 40" X 34"
- Weight: 1257 lbs
- Material: Steel



SECTION A-A

- Notes:
- Embedment details are for reference illustration only. Minimum foundation sizes depend on local soil conditions, weather conditions, and engineering requirements.
  - Bollard is provided as shown, with parts listed below. Concrete foundation and/or installation not provided by Reliance Foundry.
  - This drawing is not drawn to scale. Dimensions provided herein is for reference only. Please consult Reliance Foundry sales professionals if any dimension is critical to your particular installation.
  - Reliance Foundry reserves the right to amend design and specifications without prior notice for product improvement.

PARTS LIST			
ITEM	QTY	PART NUMBER	DESCRIPTION
1	1	R-1009-12	R-1009-12 K12 CRUSH BOLLARD
2	4	Rebar 68	Rebar 1in OD, 68in Length



Unit 207, 6450 - 148 Street, Surrey, BC V3S 7G7, Canada  
1-877-789-3245 info@reliance-foundry.com  
[www.reliance-foundry.com](http://www.reliance-foundry.com)

TITLE			
Bollard R-1009-12			
SIZE		DWG NO	REV
C		R-1009-12	A
NOT TO SCALE		SHEET 1 OF 1	